

# ELAN<sup>®</sup> INTEGRATION for TAHOMA<sup>®</sup> SWITCH



# INTEGRATION GUIDE

## ELAN® INTEGRATION for TAHOMA®

VERSION 1.0 | SEPTEMBER 2023 | Prepared by PROJECT SERVICES

### TABLE OF CONTENTS

I.	INTRODUCTION	3
II.	OVERVIEW	4
	RESOURCES & APPLICATIONS	
	SYSTEM REQUIREMENTS	
III.	INSTALLATION	5
	BUTTONS & INDICATORS	
IV.	SYSTEM PREPARATION	7
	SOMFY SYSTEM	
	ELAN SYSTEM	
V.	SET UP	7
	DOWNLOAD DRIVER	
	IMPORT TAHOMA DRIVER	
	ADD INTERFACE DRIVER	
	NETWORK SET UP	
	DEVICE TEST	
	APPENDIX	11
	A. ENABLE THIRD-PARTY INTEGRATION	
	B. AVAILABLE COMMANDS & ACTIONS	

# I. INTRODUCTION

---

The Somfy Organization's strength has been demonstrated with 50 years of experience in motorization. As leaders in the shading industry with innovative and modern solutions for homes and commercial buildings, Somfy offers the widest range of strong, quiet motors and controls for all types of applications and technologies.

## **Who is this Guide for?**

This guide is aimed at providing support and guidance to ELAN® Integrators for achieving complete automation of Zigbee® and Radio Technology Somfy® (RTS) motors with the TaHoma® switch.

## **What does this Guide contain?**

The sections of this guide contain walkthroughs and methods of controlling Zigbee and RTS devices using the TaHoma® switch as the bridge between ELAN and Smart Shading by Somfy.

For questions or assistance please contact technical support:

(800) 22-SOMFY (76639)

technicalsupport\_us@somfy.com

## **How should this Guide be used?**

This guide is intended to be used as a reference manual.

## II. OVERVIEW

---

The Somfy TaHoma® switch provides a single platform for Somfy Zigbee and RTS with a wide range of interior and exterior applications.

- The TaHoma system supports up to 50 Zigbee devices and 40 RTS channels
  - Join up to 10 TaHoma switch hubs for multi-zone control (RTS only)
- The TaHoma system supports a maximum of 40 scenes with schedules per install

Each TaHoma switch is connected to Wi-Fi or directly to the local area network by an optional Ethernet adaptor for IP Integration with third-party control systems. TaHoma is compatible with the Somfy Synergy™ API.

Details of this controller and commissioning instructions are available in the Somfy TaHoma switch Programming Guide.

### RESOURCES & APPLICATIONS

Visit [www.somfypro.com](http://www.somfypro.com) for the following guides:

- [Somfy TaHoma pro Dealer Version Programming Guide](#)
  - [Somfy RTS Pocket Programming Guide](#)

Subscribe to the Somfy YouTube Channel [www.youtube.com/somfysystems](http://www.youtube.com/somfysystems)

Visit Somfy U for all the training you need – your pace, your place [www.somfyu.com](http://www.somfyu.com)

Visit the Google Play or iOS App Store for the TaHoma by Somfy app:



[SCAN ME](#)

### SYSTEM REQUIREMENTS

PC running Windows 10 or higher

ELAN Management Cloud v1.3.0 or higher

ELAN Core Module 8.3.11 or higher



# III. INSTALLATION

## BUTTONS & INDICATORS

**TaHoma® switch #1871037**  
**TaHoma® switch (with ethernet adaptor) #1871038**

**TOP LED BEHAVIOR:**

**BLUE**  
WI-FI SETTING PROCESS

**WHITE**  
WI-FI SEARCH – 2 TIMES  
WI-FI LOST – 1 TIME

**RED**  
SCENE STOPPED – SOLID  
CONNECTION OUTAGE – BLINKING

**OFF**  
STANDING BY

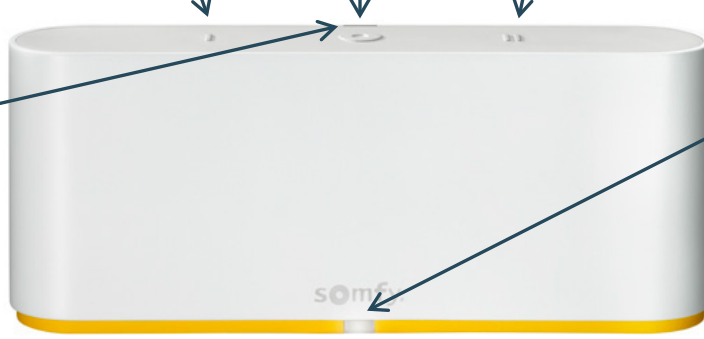
**AMBER**  
RESTARTING

**GREEN**  
TAHOMA PRO MODE

**Scene 1 Button**  
Control customized scene 1

**Stop Button**  
Stop scene underway

**Scene 2 Button**  
Control customized scene 2



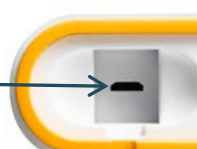
**BOTTOM LED BEHAVIOR:**


**WHITE**  
POWERED,  
CONNECTED TO CLOUD  
SERVER – SOLID  
(CAN BE DEACTIVATED)

**RED**  
POWERED,  
NOT CONNECTED  
TO CLOUD SERVER – SOLID

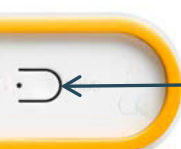
**OFF**  
NOT POWERED

**Micro USB Port**  
Connect power or Ethernet Adaptor





**Reset Button**  
PRESS & HOLD to reset TaHoma switch



### TaHoma® Ethernet Adaptor #1870470 (Sold Separately)

Connect for a wired local area network connection

**Micro USB**  
Connect to TaHoma® switch for power and Ethernet

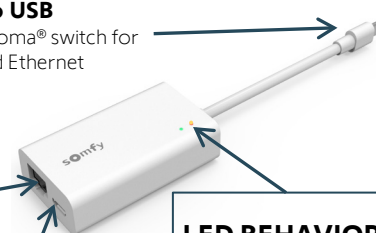
**Ethernet Port**  
Connect to network router or switch

**Micro USB Port**  
Connect power through Ethernet Adaptor

**LED BEHAVIOR:**

**GREEN**  
ETHERNET CONNECTION

**AMBER**  
DATA TRANSFER



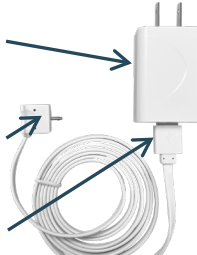
### Plug-in Power Supply Required (Included with TaHoma® switch)

Connect to line-voltage to power TaHoma switch

**Power Supply**  
Plug-in Transformer to line-voltage outlet

**Micro USB**  
Connect power to TaHoma switch

**Standard USB**  
Connect cable to Transformer



### Ysia 1 & 5 Zigbee Remotes

Ensure the remote is powered  
Pressing any button will illuminate the LED(s)

#### Ysia 1 Zigbee #1871153 Ysia 5 Zigbee #1871154

#### Status LED Indicator

Commands and Zigbee network activity

#### UP Button

#### MY/STOP Button

#### DOWN Button

#### Channel LED Indicator

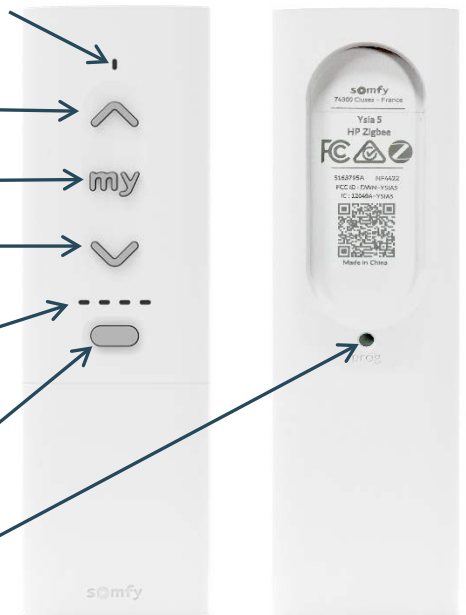
Show channel selected

#### Channel Selection Button

Select channel

#### Programming Button

Pair and reset products



# BUTTONS & INDICATORS

## WAKING THE MOTOR:

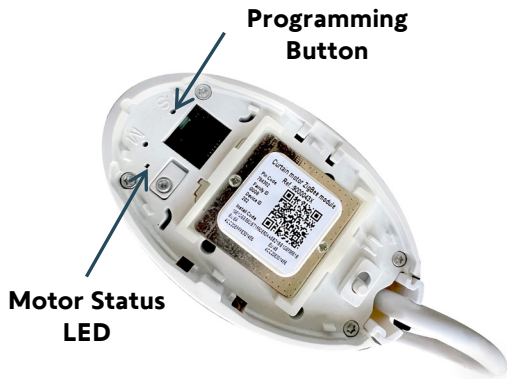
Ensure the motor has required power available.

Using a small paper clip or similar, BRIEFLY PRESS the Programming Button on the head of the motor  
OR

PLUG IN the battery supply/charger.

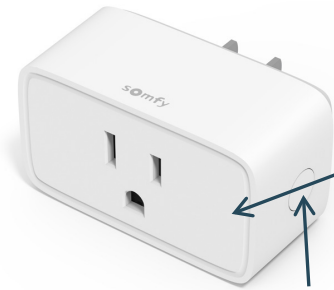
The motor will jog (briefly move up and down), and the LED will illuminate **GREEN** for 2 seconds.  
The LED will blink **AMBER** continuously during programming.

### DRAPER MOTOR



### Smart Plug Zigbee #1871217

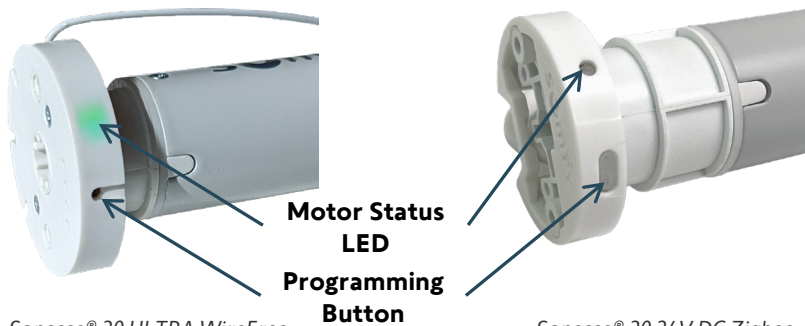
Ensure the Smart Plug is plugged into a properly powered outlet  
QR Code and power button are on opposite sides of the plug



#### LED BEHAVIOR:

- RED**
- NOT CONNECTED – SOLID 3s
- OUTPUT OFF – SOLID
- AMBER / GREEN**
- PAIRING MODE – BLINKING
- GREEN**
- CONNECTED – SOLID 3s
- POWERED – SOLID
- OFF
- NOT PAIRED
- NOT POWERED

### ROLLER MOTOR



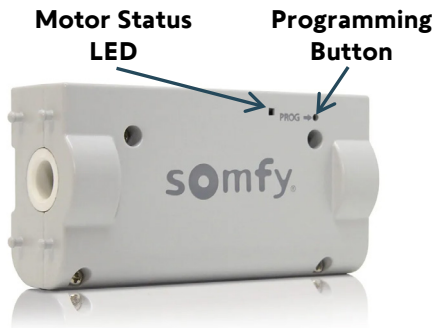
Sonesse® 30 ULTRA WireFree  
Li-Ion Zigbee shown above  
(Same for Sonesse® WireFree™ motors)

Sonesse® 30 24V DC Zigbee  
shown above

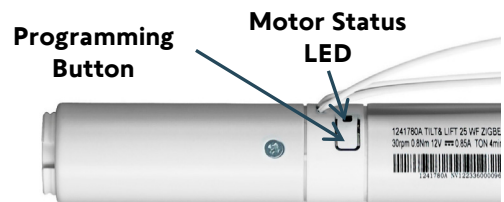
#### MOTOR STATUS LED BEHAVIOR:

- AMBER**
- MOTOR IS NOT SET  
IN SETTING MODE  
IN ADJUSTMENT MODE
- GREEN**
- MOTOR IS CHARGING  
CONFIRMED SETTING
- RED**
- LOW BATTERY CHARGE  
THERMAL PROTECTION  
IMPOSSIBLE SETTING
- OFF
- PAIRED AND OPERATIONAL

### TILT MOTOR



### CORD LIFT MOTOR



## IV. SYSTEM PREPARATION

### SOMFY SYSTEM

A fully operational TaHoma system is required prior to ELAN programming. The TaHoma system supports up to 50 Zigbee devices and 40 channels of RTS. RTS devices programmed to an RTS channel will only receive commands from the associated TaHoma switch hub. Hubs must be placed within 25-35' of the devices they control.

- Confirm with the Shade Commissioning Agent that the TaHoma switch firmware is up to date
- An Integration Report is generated in the TaHoma app which will include the TaHoma switch PIN and IP address
  - Ensure that a DHCP Reservation via MAC Address of the TaHoma switch is being used
  - Third-Party Integration must first be enabled in the TaHoma app ([see Appendix A](#))

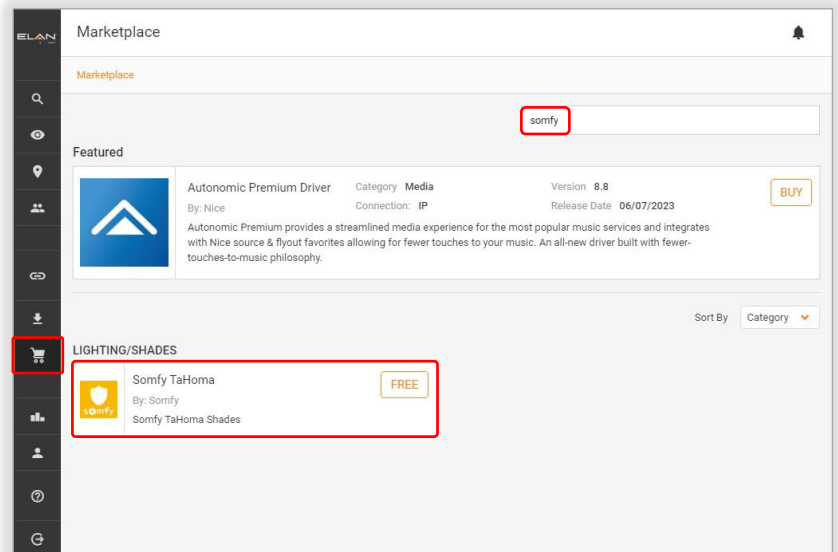
### ELAN SYSTEM

A fully operational ELAN system is required prior to TaHoma integration.

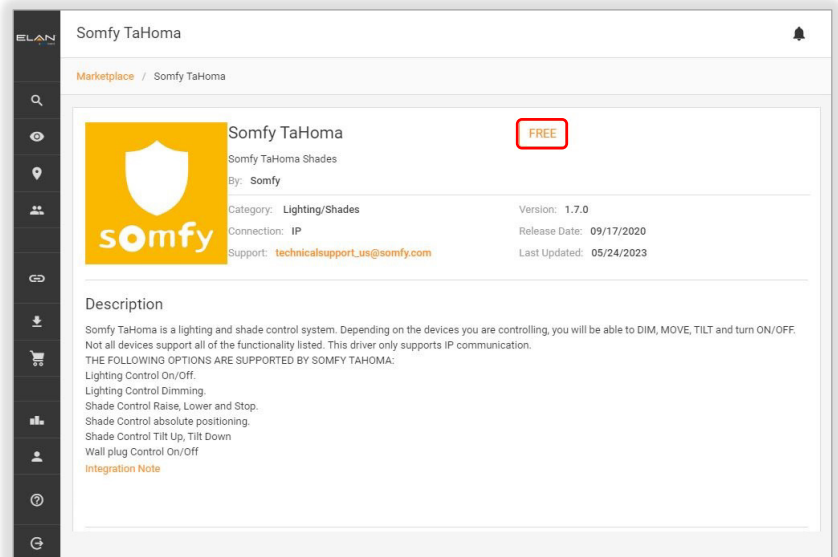
## V. SET UP

### DOWNLOAD DRIVER

- 1) OPEN the ELAN Management Cloud
- 2) SELECT "Marketplace"  
*Marketplace is the Shopping Cart icon.*
- 3) ENTER "somfy" in the Search field
- 4) SELECT "Somfy TaHoma"



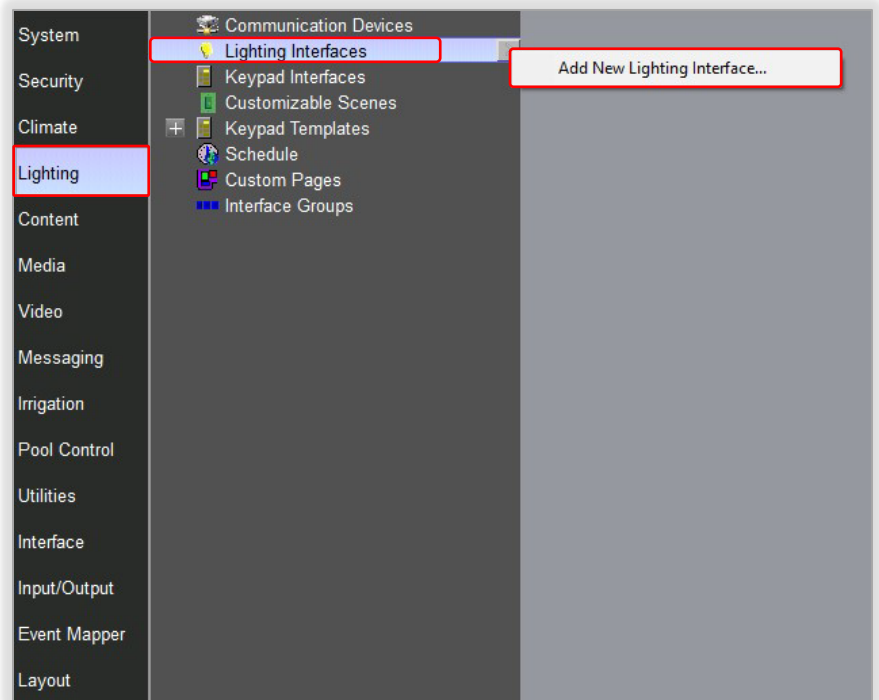
- 5) SELECT "FREE"  
*The file will download to the default web browser Downloads folder.*



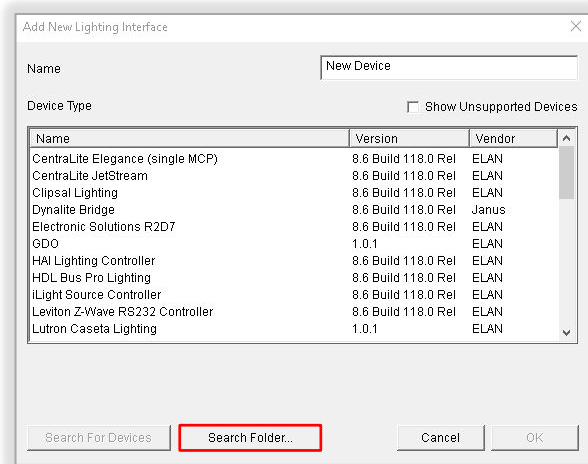
# IMPORT TAHOMA DRIVER

Import the latest TaHoma driver from the ELAN Marketplace. A fully operational TaHoma system is required prior to ELAN programming.

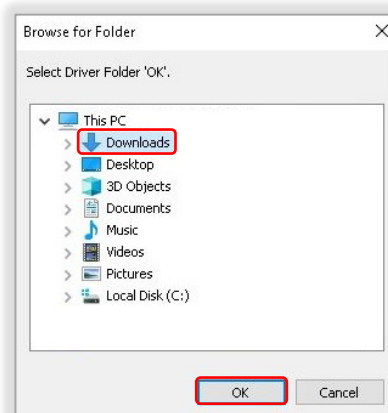
- 1) In the ELAN Management Cloud, LAUNCH the Configurator
- 2) SELECT "Lighting"
- 3) SELECT the "Lighting Interfaces" arrow or RIGHT-CLICK "Lighting Interfaces"
- 4) SELECT "Add New Lighting Interface..."



- 5) SELECT "Search Folder"



- 6) SELECT the driver folder where the Somfy TaHoma driver was downloaded
- 7) SELECT "OK"

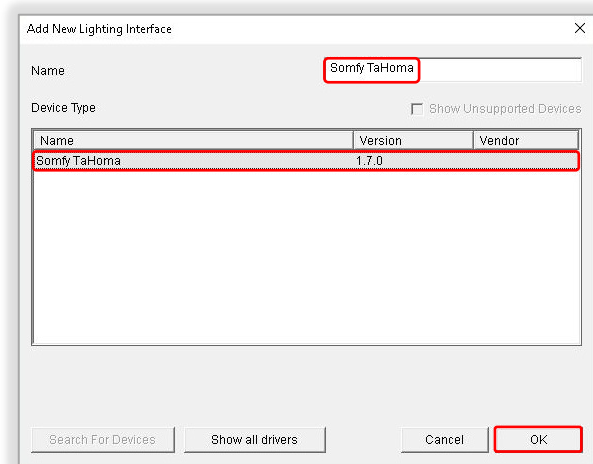




## ADD INTERFACE DRIVER

A fully operational TaHoma system is required prior to ELAN programming.  
For multiple TaHoma installations, repeat the steps below for each additional TaHoma switch.

- 1) ENTER an associated location name for the TaHoma switch in the Name field
- 2) SELECT "Somfy TaHoma" in Device Type list
- 3) SELECT "OK"



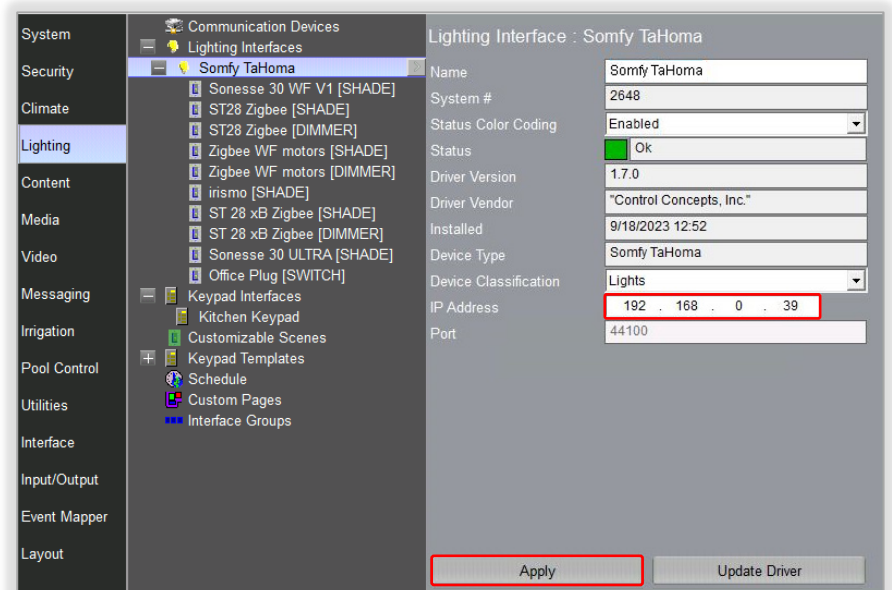
## NETWORK SET UP

Third-Party Integration must be enabled in the TaHoma app. Refer to the Integration Report for the TaHoma switch IP address. Ensure that a DHCP Reservation via MAC Address of the TaHoma switch is being used. Shades will auto-populate when communication is established.

- 1) ENTER the IP Address of the TaHoma in the IP Address field
- 2) SELECT "Apply"
- 3) In the TaHoma app Partners section, SELECT "ELAN" ([see Appendix A](#))
- 4) CONFIRM the Status displays "OK"

The Status will change to **GREEN** when communication is successfully established.

Select and rename each device listed to the appropriate location where necessary.

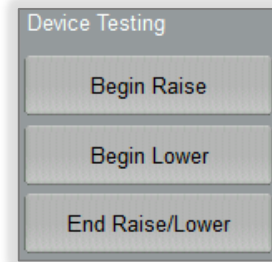


## DEVICE TEST

[See Appendix B](#) of this guide for a list of Somfy TaHoma specific commands and actions. RTS motors do not report positional feedback. RTS motors are capable of one programmable "my" or favorite position that requires an End Raise/Lower command when the motor is at rest.

### Test RTS Motors

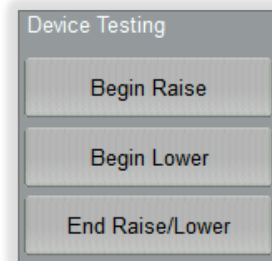
- 1) SELECT an RTS Device [SHADE]
- 2) SELECT any of the three commands under Device Testing



### Test Zigbee Motor [SHADE] Profile

*NOTE: Zigbee devices will appear as a shade for Raise and Lower commands.*

- 1) SELECT a Zigbee [SHADE]
- 2) SELECT any of the three commands under Device Testing

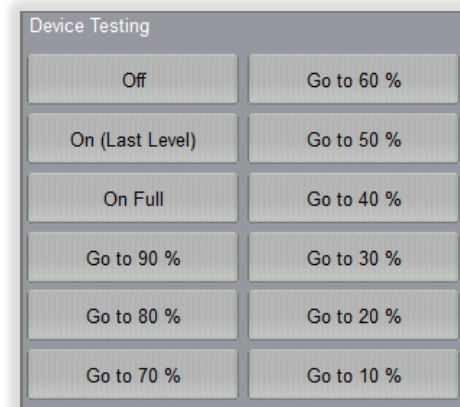


*[SHADE] profile for Zigbee*

### Test Zigbee Motor [DIMMER] Profile

*NOTE: Zigbee devices will appear as a dimmer for percentage commands.*

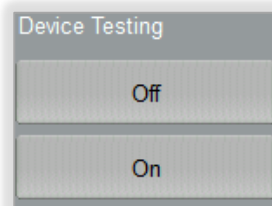
- 1) SELECT a Zigbee [DIMMER]
- 2) SELECT any of the percentage commands under Device Testing



*[DIMMER] profile for Zigbee*

### Test Smart Plug

- 1) SELECT a Smart Plug [SWITCH]
- 2) SELECT any of the two commands under Device Testing

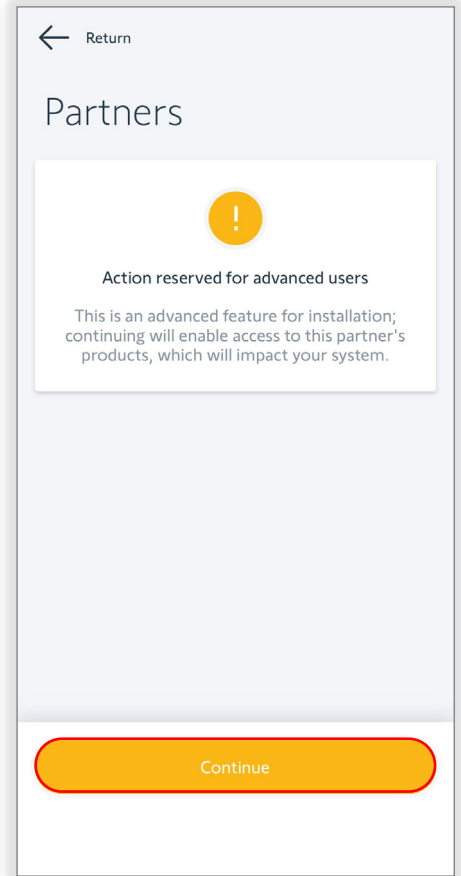
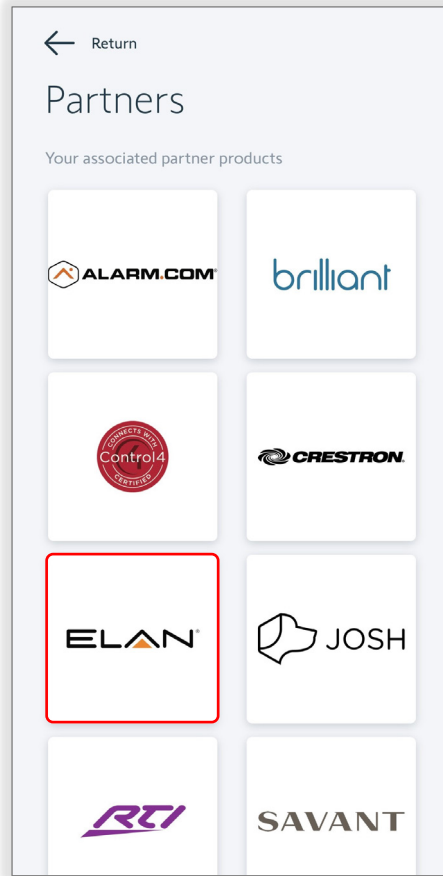
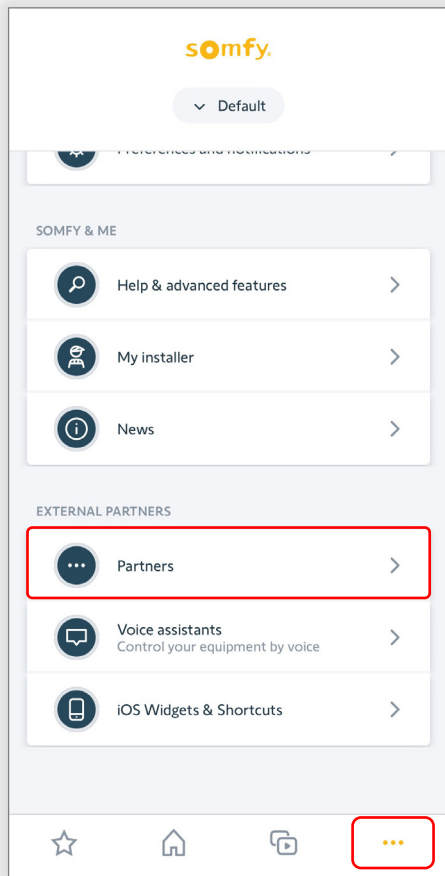


# APPENDIX

## [ APPENDIX A ] ENABLE THIRD-PARTY INTEGRATION

- 1) OPEN the TaHoma by Somfy app
- 2) SELECT the Menu icon in the bottom bar
- 3) SELECT "Partners"
- 4) SELECT "ELAN"
- 5) SELECT "Continue"

The Integration Report will display all connected products.





TAHOMA ZIGBEE [SHADE] COMMANDS	
Begin Lower	Moves blind to the fully closed position
Begin Raise	Moves blind to the fully open position
End Raise/Lower	Stops blind when moving



TAHOMA ZIGBEE [DIMMER] COMMANDS	
Off	Moves blind to the fully closed position
On Full	Moves blind to the fully open position
On (last level)	Last ON position
Go to %	Percentage positions between 90% & 10%



TAHOMA SMART PLUG [SWITCH] COMMANDS	
On	Turns power on to lighting or small appliance
Off	Turns power off to lighting or small appliance



TAHOMA RTS [SHADE] COMMANDS	
Begin Lower	Moves blind to the fully closed position
Begin Raise	Moves blind to the fully open position
End Raise/Lower	Stops blind movement or moves blind to the programmed "my" position if the blind is at rest

**FOR QUESTIONS OR ASSISTANCE PLEASE CONTACT TECHNICAL SUPPORT:**

(800) 22-SOMFY (76639)

[technicalsupport\\_us@somfy.com](mailto:technicalsupport_us@somfy.com)

© Somfy Systems, Inc. • **SEPTEMBER 2023**  
All brands, products, and trademarks are the property of their respective owners.



**About Somfy®**

For over 50 years, Somfy has been pioneering innovative motorization and automated solutions for window coverings and exterior shading products. With comfort, ease of use, security, and sustainability in mind, our seamless and connected solutions are designed to help people make the move to living spaces impactful for humans and with a reduced impact on nature.

A BRAND OF **SOMFY** GROUP

New Jersey  
121 Herrod Blvd.  
Dayton, NJ 08810  
T: (609) 395-1300  
F: (609) 395-1776

**Somfy Systems, Inc.**  
T: **(800) 22-SOMFY**  
[www.somfypro.com](http://www.somfypro.com)  
Florida  
1200 SW 35th Ave.  
Boynton Beach, FL 33426  
T: (561) 995-0335  
F: (561) 995-7502

California  
15301 Barranca Pkwy.  
Irvine, CA 92618-2201  
T: (949) 727-3510  
F: (949) 727-3775

**Somfy ULC**  
T: **(800) 66-SOMFY**  
[www.somfypro.ca](http://www.somfypro.ca)  
Canada  
6411 Edwards Blvd.  
Mississauga, ON L5T 2P7  
T: (905) 564-6446  
F: (905) 238-1491