

Irismo Enclosure Installation

Somfy P/N - 9021132

Tools Required:

- Torx T-9 Bit (For original motor screws)
- Torx T-10 Bit (For replacement screws)

Kit Includes:

- ABS Plastic Enclosure (Top and Bottom Halves)
- Snap-Together Velcro
- (2) M3 x 25 T-10 Torx Screws

Installation:

1. Using a T-9 screwdriver, remove the (2) Torx screws near the modular jack as shown below:



2. Take the bottom half of the enclosure and using a T-10 screwdriver, fasten to Irismo via (2) M3 x 25 screws until snug.



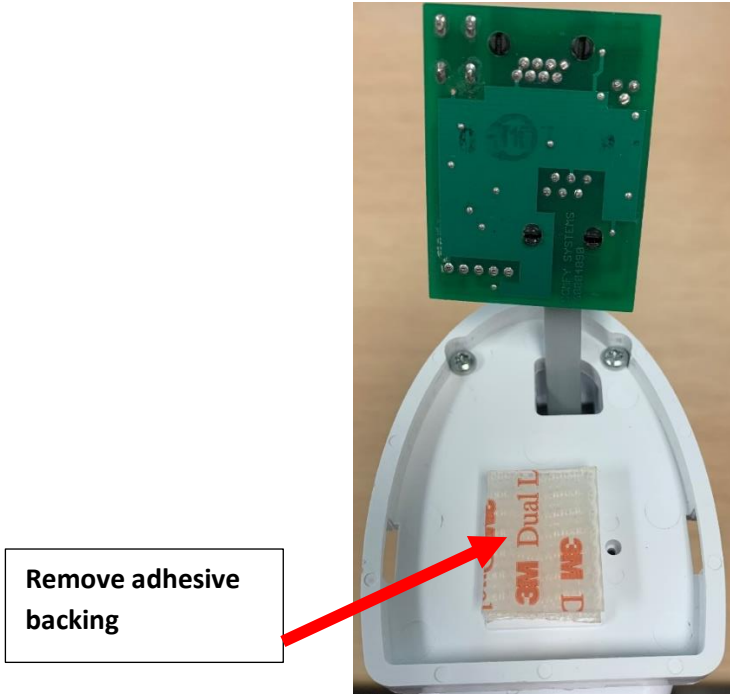
3. Take Snap-Together Velcro and stick one side to the raised rectangle. Press and hold Velcro for a few seconds to ensure good adhesion.



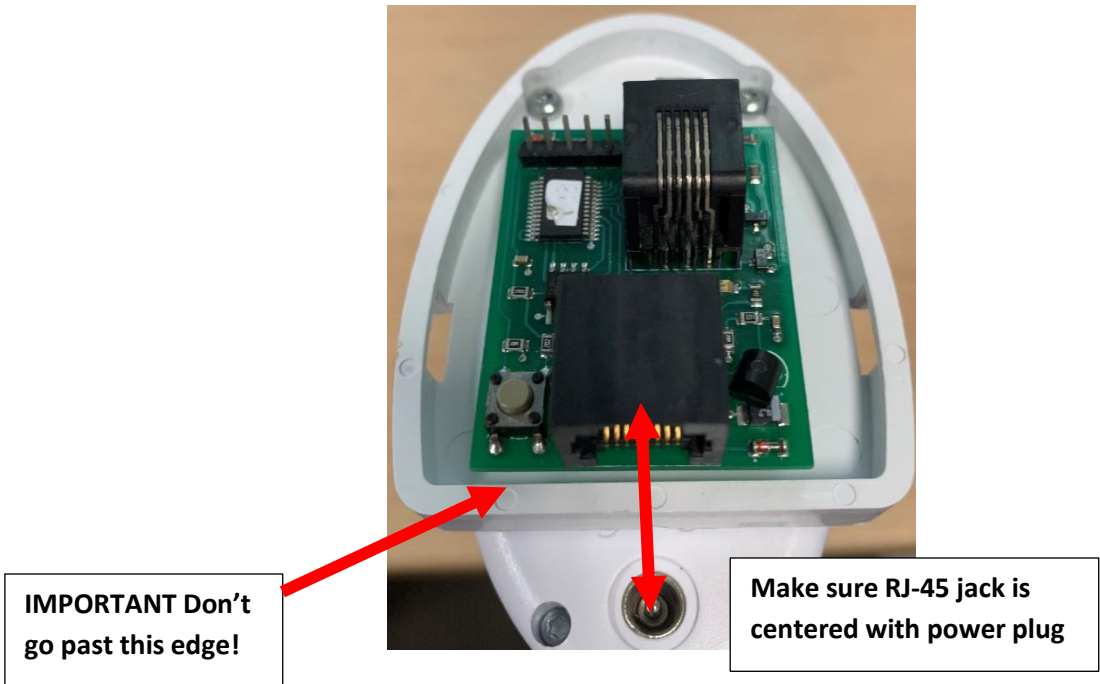
4. The Irismo Enclosure is designed to house 3 different interface cards:
- **SDN** (P/N: 1811129) **Zigbee** (P/N: 1870221) & **Z-Wave** (P/N: 1870228)

4a. SDN Card Installation

- Insert the RJ-12 plug into the motor and remove the Velcro adhesive backing.

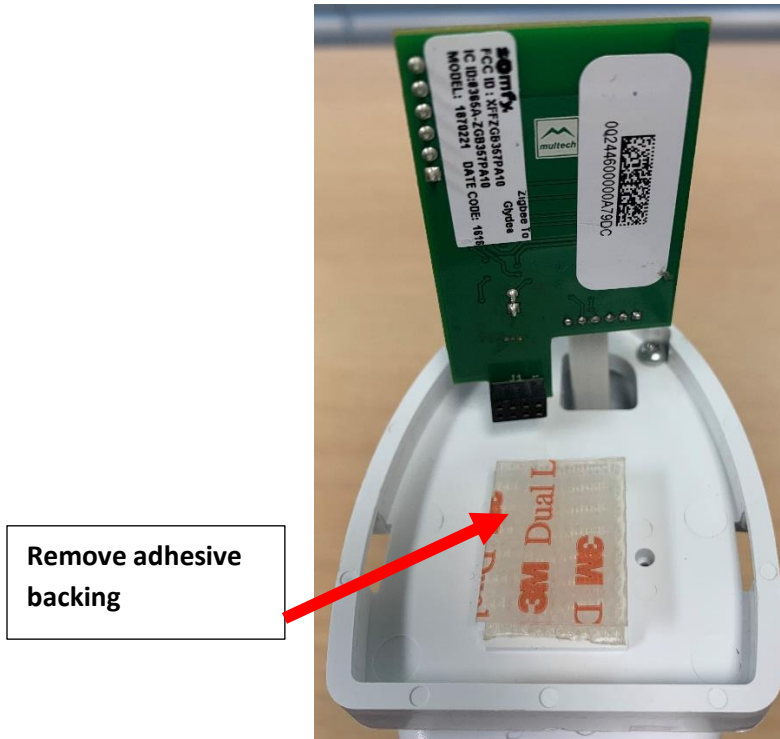


- Center card inside enclosure as shown below:

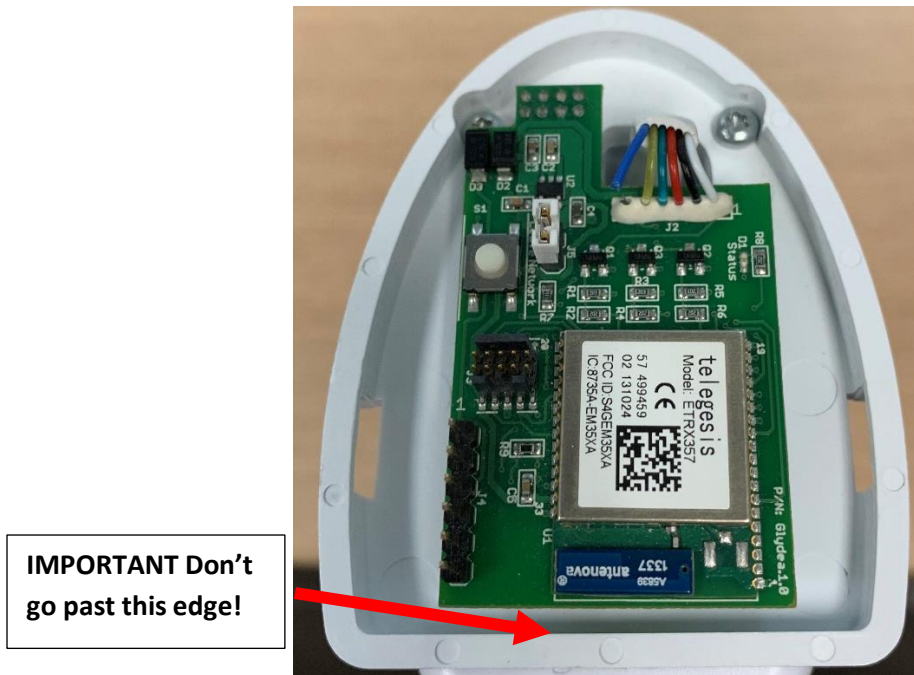


4b. Zigbee Card

- Insert the RJ-12 plug into the motor and remove the Velcro adhesive backing:

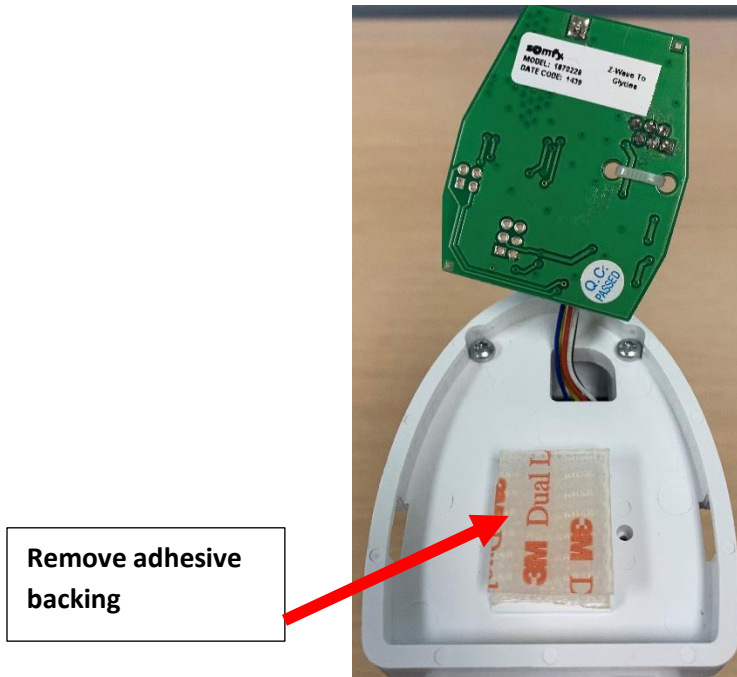


- Center card inside enclosure as shown below:

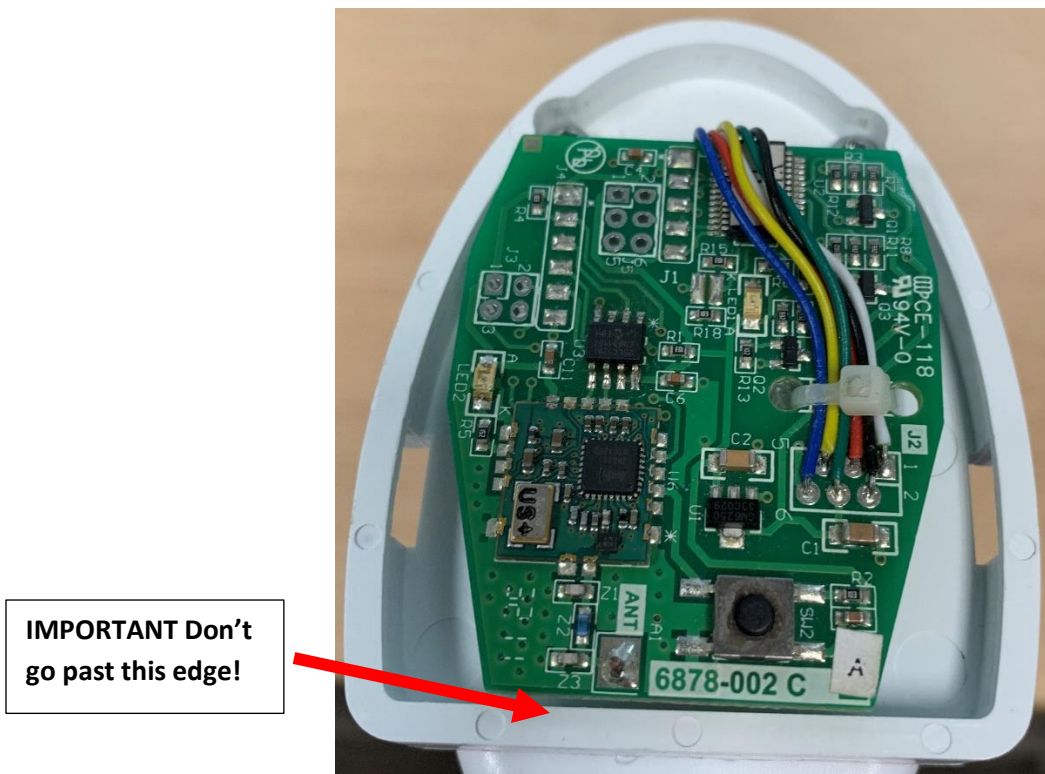


4c. Z-Wave Card

- Insert the RJ-12 plug into the motor and remove the adhesive backing:



- Center card inside enclosure as shown below:



5. Attach the top by squeezing and aligning the hooks with the slots:



Installation is complete!