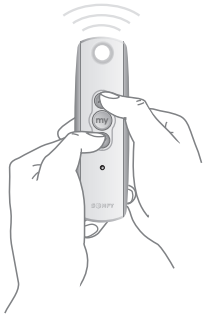
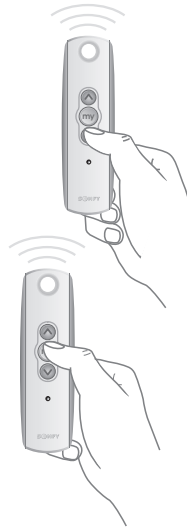


# CordLift WireFree™ Visual Reference Guide

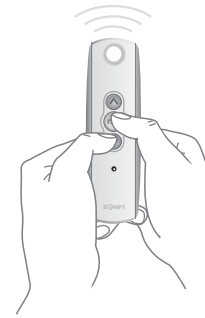
## CT32-RT-12: Pleated and Cellular Shades



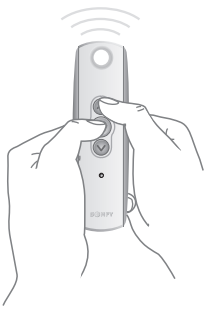
**STEP 1**  
Initiate programming by pressing both the **▲ (Up)** and **▼ (Down)** buttons at the same time until the shade jogs.



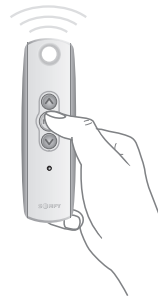
**STEP 2**  
Check the direction of operation. Press and hold the **▼** button and confirm it moves the shade down (the motor will be in momentary fashion). To change the direction press and hold the **my (Stop)** button until the shade jogs.



**STEP 3**  
Bring the shade to your desired upper limit. Press and hold both the **my** and **▼** buttons until the shade begins to move down, then release. Stop the shade where the lower limit should be set, you can adjust by pressing the **▲** or **▼** buttons.



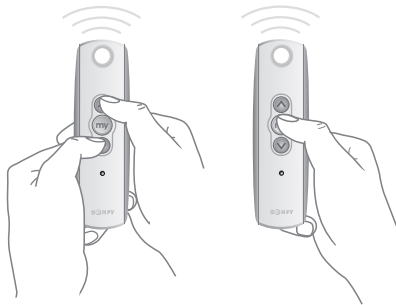
**STEP 4**  
Press and hold the **my** and **▲** buttons until the shade begins to move up. The shade will stop at the original upper point. Adjust if necessary.



**STEP 5**  
Press and hold the **my** button until the shade jogs to confirm the limit setting.



**STEP 6**  
Press and hold the **Program** button on the back of the transmitter until the shade jogs. It will now operate in a maintained fashion. Double check limits as a precaution.



### TO ADJUST LIMITS

**To change the lower limit:** Move the shade to its current lower limit position and let it stop. Press the **▲** and **▼** buttons simultaneously until the shade jogs, then release. Adjust to a new lower limit position. Press the **my** button until the shade jogs, then release. Check new limit.

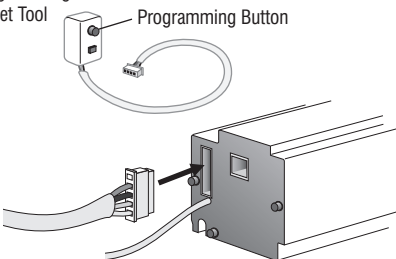
**To change the upper limit:** Move the shade to its current upper limit position and let it stop. Press the **▲** and **▼** buttons simultaneously until the shade jogs, then release. Adjust to a new upper limit position. Press the **my** button until the shade jogs, then release. Check new limit.



### TO ADD A REMOTE/CHANNEL OR SUN AND WIND SENSOR

First press the programming button on the back of the already programmed remote until the motor jogs. Then press the programming button on the remote or sun/wind sensor that you would like to add until the motor jogs. Check it.

Programming Reset Tool



### TO RESET THE MOTOR

Insert reset tool into connector on motor. **To delete all transmitters**, press and hold the program button located on the reset tool for 7 seconds. Release the programming button after the LED starts flashing. The motor jogs one time. The transmitters are deleted but the limits remain in memory. **To delete all previous settings** press and hold the program button located on the reset tool (approximately 12 seconds) until LED blinks rapidly then extinguishes. Motor is now reset to factory mode and motor limits will need to be reset.

Please contact SOMFY for detailed installation instructions

**somfy**®