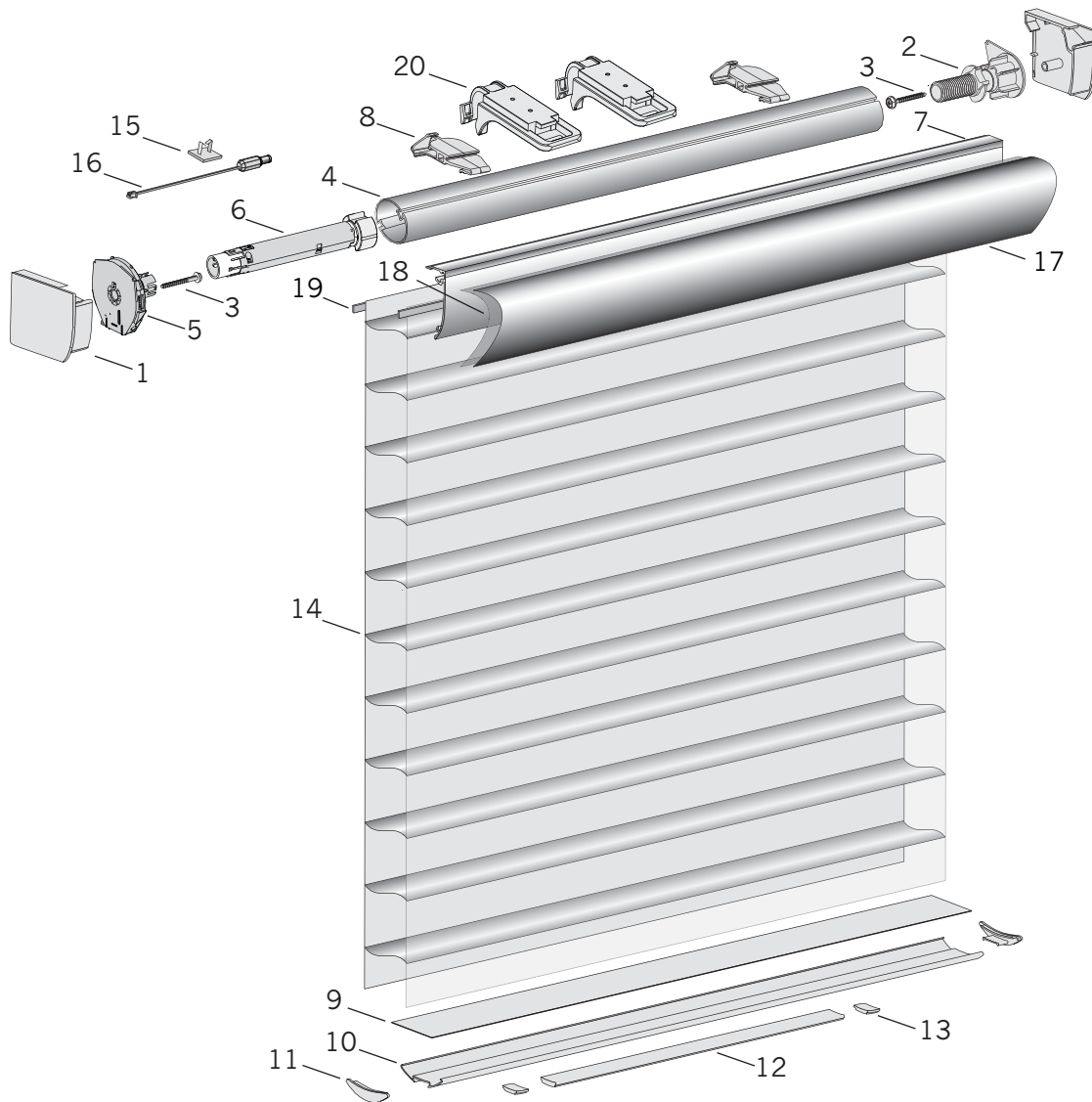


Silhouette® and Nantucket® Shadings



NOTE:All Nantucket window shadings now offer the oversized headrail exclusively.

Standard Parts

- | | | |
|-----------------------------|--------------------------|-------------------------|
| 1. Headrail End Caps | 8. SU Std. Top Limit | 15. Wire Saddle |
| 2. URR Limit Screw Assembly | 9. Bottom Slat | 16. Power Adapter Cable |
| 3. Screw | 10. Bottom Rail | 17. FCH Fabrid |
| 4. Universal Rotator Rail | 11. Bottom Rail End Caps | 18. Full Width Tape |
| 5. SU Cartridge Assembly | 12. Balance Weight | 19. Polystrip with Tape |
| 6. URR Motor Assembly | 13. Weight Clips | |
| 7. Fabric Covered Headrail | 14. Fabric | |

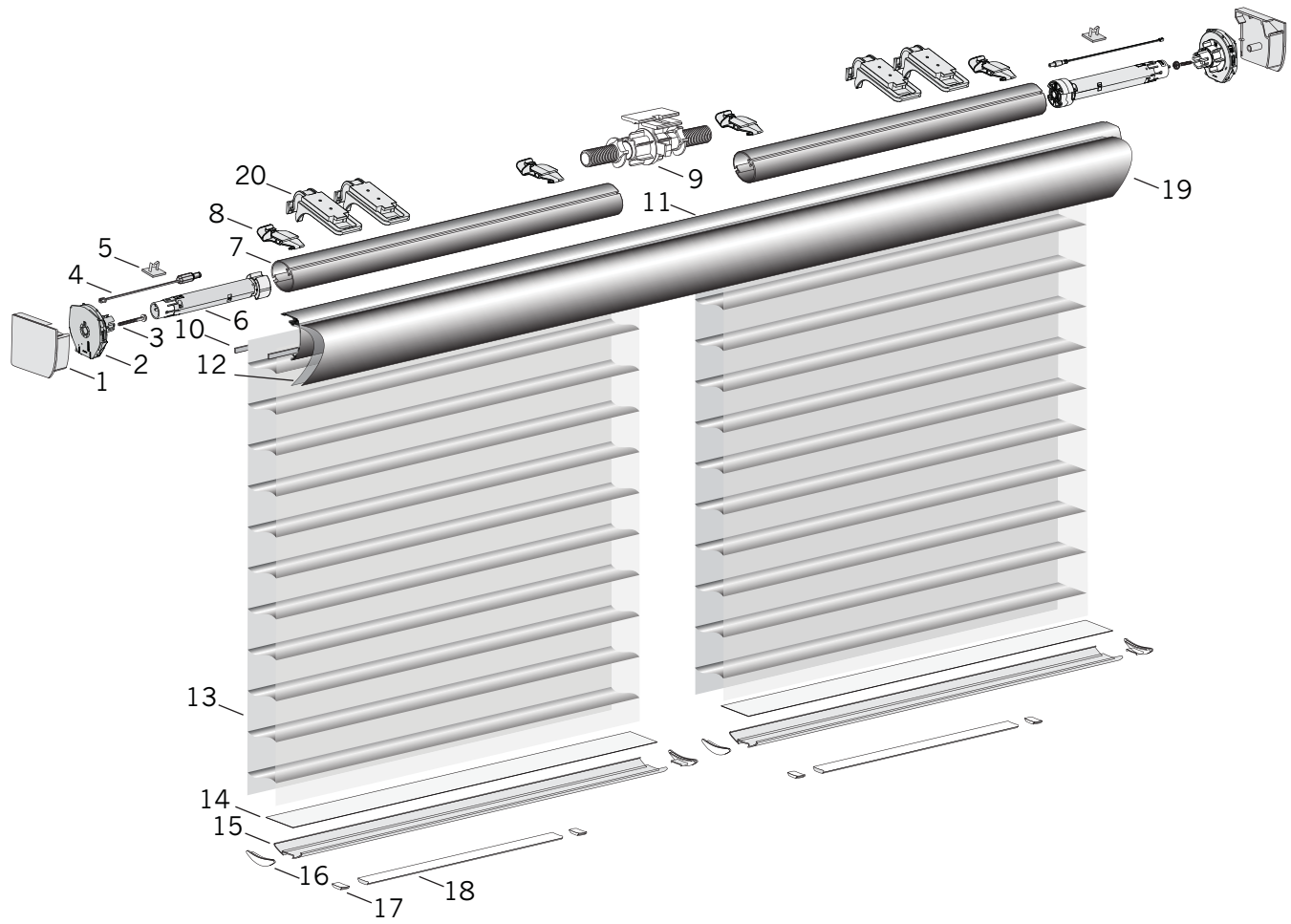
Silhouette® and Nantucket® Shadings

No.	PCN	Description
1.	Headrail End Caps	
	4178201xxx	Oversized (Not Shown)
	4158226xxx	Standard (Silhouette® Only)
2.	URR Limit Screw Assembly, PowerRise®	
	4158219000	LH
	4158218000	RH
3.	4150158000	Screw #10 x 5/8" Sheet Metal Washer Head Screw Zinc-Plated
4.	Rotator Rail	
	4150260xxx	Standard Universal Rotator Rail (Silhouette® Only) (785 – For all fabrics except A20 & A27)
	4150054xxx	Thin-Walled Rotator Rail (Nantucket™ Only)
5.	SU Cartridge Asm, STD, Platinum™ 2.1	
	4151068005	RH
	4151070005	LH
6.	4150381000	URR Motor Assembly
7.	Fabric Covered Headrail	
	4158256661	Standard (Select Fabric Color)(Silhouette Only)
	4170314661	Oversized (Not Shown) (Select Fabric Color for Silhouette – Nantucket FCH is optional)
8.	4150057885	SU Std. Top Limit
9.	N/A	Bottom Slat
10.	4150128xxx	Bottom Rail
11.	4150084xxx	Bottom Rail End Caps
12.	4150082xxx	Balance Weight (Bottom Rail Weight)
13.	4150083xxx	Weight Clips
14.	N/A	Fabric
15.	2981136000	Wire Saddle
16.	2920247000	Power Adapter Cable
17.	N/A	FCH Fabric
18.	Full Width Tape	
	4150153500	SU FW Tape, 3.219" X 320 Yards
	4150155500	NAN FW Tape, 3.219" X 60 Yards
19.	4150288785	Polystrip With Tape
20.	4150223885	Bracket, Battery-Mounting AA

4151068006-RH
 4151070006-LH 10-1-19

xxx = 3-digit color code

Silhouette® and Nantucket® Two-On-One Shadings



NOTE: All Nantucket window shadings now offer the oversized headrail exclusively.

Standard Parts

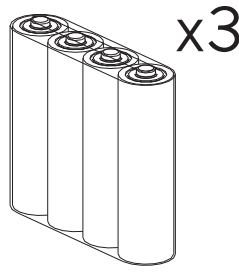
- | | | |
|---------------------------|-----------------------------|---|
| 1. Headrail End Caps | 8. SU Std. Top Limit | 15. Bottom Rail |
| 2. Cartridge Asm | 9. Dual Rotator Assembly | 16. Bottom Rail End Caps |
| 3. Screw #10 x 5/8" | 10. Polystrip With Tape | 17. Weight Clips |
| 4. Power Adapter Cable | 11. Fabric Covered Headrail | 18. Balance Weight (Bottom Rail Weight) |
| 5. Wire Saddle | 12. Full Width Tape | 19. FCH Fabric |
| 6. URR Motor Assembly | 13. Fabric | 20. Battery Bracket |
| 7. Universal Rotator Rail | 14. Bottom Slat | |

Silhouette® and Nantucket® Two-On-One Shadings

No.	PCN	Description
1.	Headrail End Caps	
	4178201xxx	Oversized (Not Shown)
	4158226xxx	Standard (Silhouette® Only)
2.	SU Cartridge Asm, STD, Platinum™ 2.1	
	4151068005	RH
	4151070005	LH
3.	4150158000	Screw #10 x 5/8" Sheet Metal Washer Head Screw Zinc-Plated
4.	2920247000	Power Adapter Cable
5.	2981136000	Wire Saddle
6.	4150381000	URR Motor Assembly
7.	Rotator Rail	
	4150260xxx	Standard Universal Rotator Rail (Silhouette® Only) (785 – For all fabrics except A20 & A27)
	4150054xxx	Thin-Walled Rotator Rail (Nantucket™ Only)
8.	4150057885	SU Std. Top Limit
9.	Dual Rotator Assembly	
	4158208000	Standard (Silhouette Only)
	4158207000	Oversized (The Matisse Collection Only)
10.	4150288785	Polystrip With Tape
11.	Fabric Covered Headrail	
	4158256661	Standard (Select Fabric Color)(Silhouette Only)
	4170314661	Oversized (Not Shown) (Select Fabric Color for Silhouette) Nantucket FCH is optional
12.	Full Width Tape	
	4150153500	SU FW Tape, 3.219" X 320 Yards
	4150155500	NAN FW Tape, 3.219" X 60 Yards
13.	N/A	Fabric
14.	N/A	Bottom Slat
15.	4150128xxx	Bottom Rail
16.	4150084xxx	Bottom Rail End Caps
17.	4150083xxx	Weight Clips
18.	4150082xxx	Balance Weight (Bottom Rail Weight)
19.	N/A	FCH Fabric
20.	4150223885	Bracket, Battery-Mounting AA

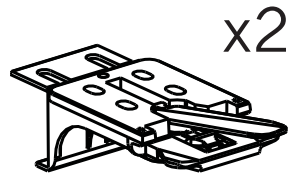
xxx = 3-digit color code

Silhouette® and Nantucket® Standard Hardware

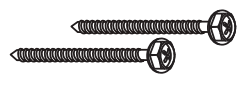


x3

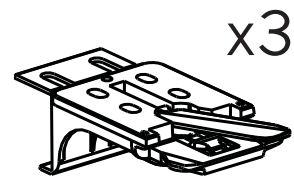
AA Batteries (12 per kit/
shading)
KIT2529



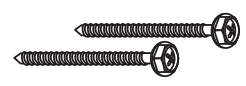
x2



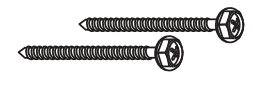
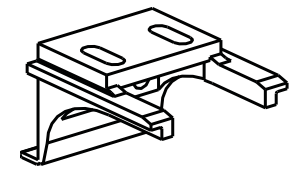
Lever Installation Brackets
2 Pack
KIT9109



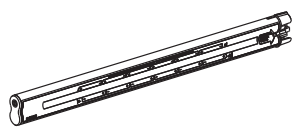
x3



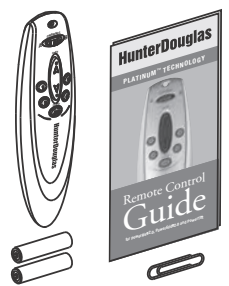
Lever Installation Brackets
3 Pack
KIT9110



Center Support Bracket (Two-
On-One shadings only)
PCN 4150003032



Battery Wand 18-Volt
(batteries not included)
PCN 2920499000



IR/RF Remote Control Kit
PCN 2984495000



Hunter Douglas Warranty
Registration Card
PCN 7109933000

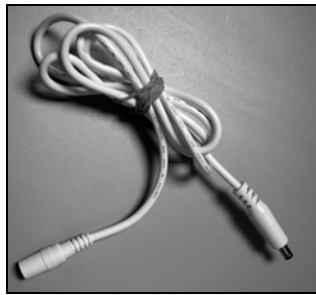


Silhouette® and Nantucket®
Window Shadings PowerRise®
With Platinum™ Technology
Lifting Systems Installation,
Operation and Care Guide.
PCN 5107240000

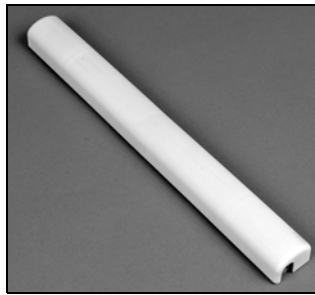
Silhouette® and Nantucket® Optional Hardware



External Eye - 20' Wire
PCN 4151187002
External Eye - 4' Wire
PCN 4151188002
External Eye - 8' Wire
PCN 4151189002



Modular Wire
PCN 2989899000 - 15'
PCN 2989900000 - 4'
PCN 2989901000 - 10'
PCN 2989902000 - 20'



Optional 18 Volt Satellite
Battery Pack Kit 2520 (Kit
does not include wire. Modular
wire length must be selected
and ordered separately)



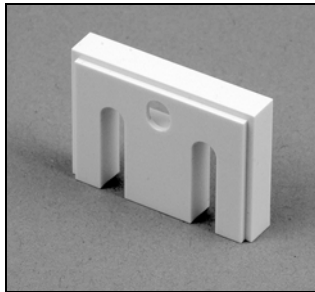
Optional DC Power Supply,
18-Volt PCN 2989038000
(Does not include wire.
Modular wire length must be
selected and ordered
separately)



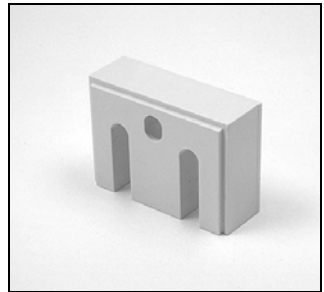
18 Volt Daisy Chain Y Adapter
PCN 2989875000



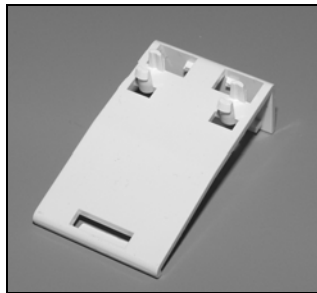
Wireless Wall Switch
PCN 2986350000



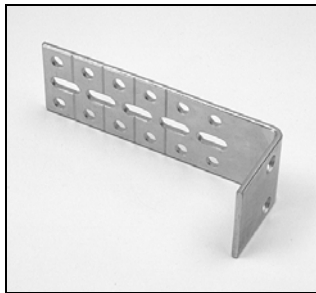
1/4" Spacer Block
PCN 4150239000



1/2" Spacer Block
PCN 2930230000



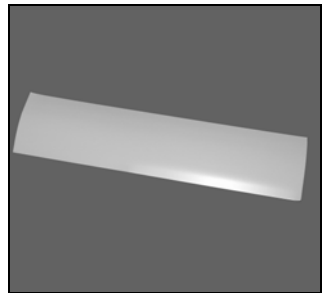
Back Cover Bracket
PCN 4150256000



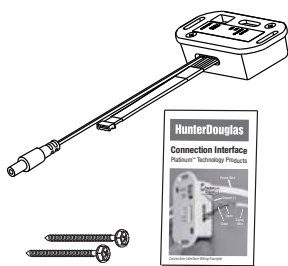
Extension Bracket
PCN 2930340000



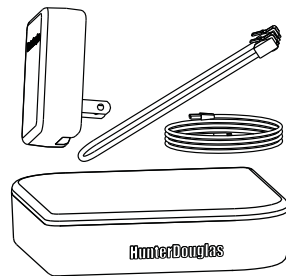
Silhouette® Nantucket® Dust
Cover Installation Kit
Loops PCN 4150077000
Hooks PCN 4150078000



Back/Dust Cover
PCN 4150149000



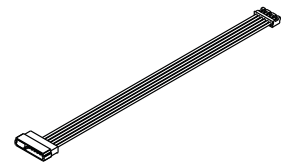
Connection Interface
PCN 4254220005



HC-VI Bridge
PCN 2920071000



HC-VI Repeater
PCN 2920075000



Interface Module Cable (only
used with connection
Interface)
PCN 4151186000