

Pergola Tilt RTS Control Box Programming Quick Reference Guide: Semi-Auto

BEFORE YOU BEGIN: Confirm the Dip Switches are set to the correct position and all wiring is done.

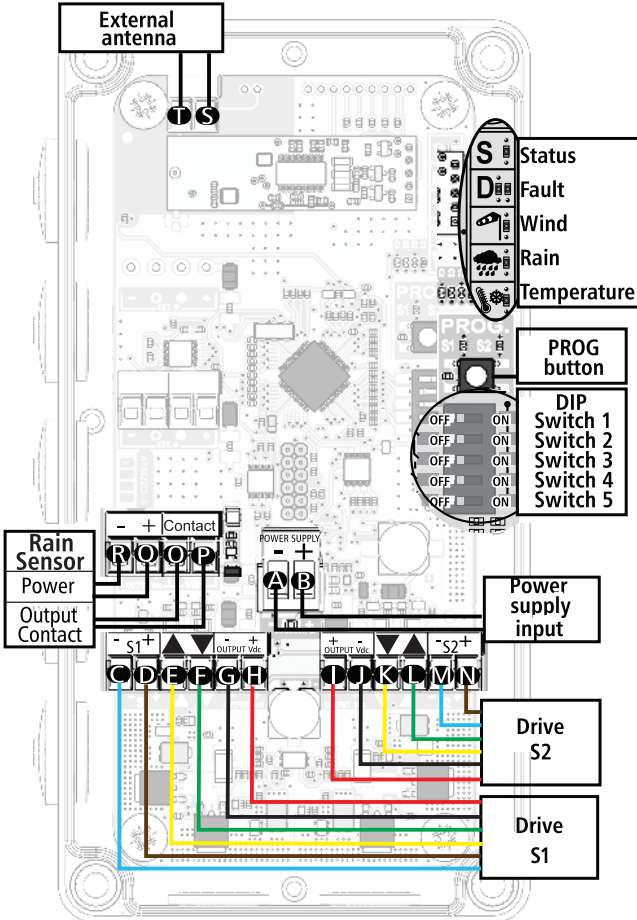
DESCRIPTION & CONNECTIONS

Switch 1	
ON	Drive with encoder sensor
OFF	Drive without encoder sensor
Switch 2 (Requires Switch 1 ON)	
ON	Activates synchronization S1 and S2
OFF	Deactivates synchronization S1 and S2
Switch 3	
ON	5.5 A max. per output
OFF	3 A max. per output
Switch 4	
ON	Activates the temperature sensor
OFF	Deactivates the temperature sensor
Switch 5	
ON	Open 50% in the event of wind
OFF	Open 100% in the event of wind

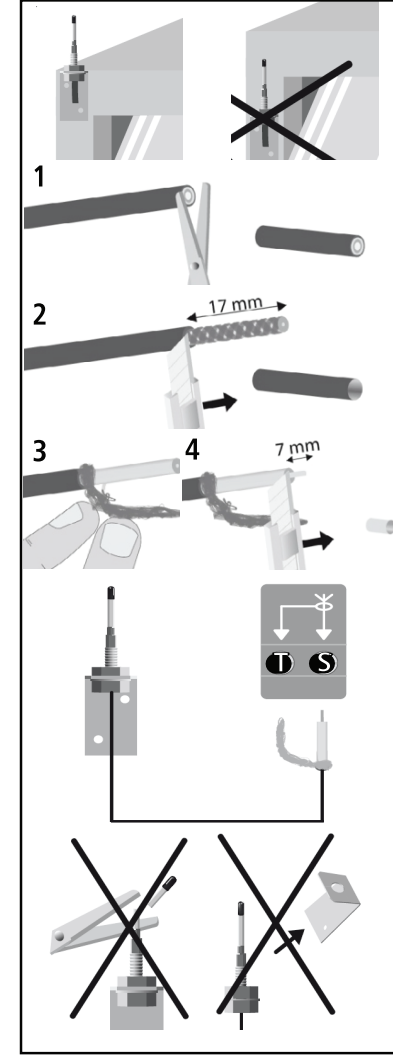
Input Power Supply		
A	-	24 Vdc power supply input
B	+	(SELV)

S1	Drive Power	S2
BLU - C	24 Vdc - 3A/5.5A	BLU - M
BRN - D	Selected via Dip Switch 3	BRN - N
Encoder Signal		
YEL E	Encoder Requires Dip Switch 1 ON	YEL K
GRN F		GRN L
Encoder Power		
BLK - G		RED+ I
RED+ H		BLK - J

Rain Sensor		
O	Contact	Dry contact input
P	Common	
Q	+	Power supply output: 24 VDC 300 mA
R	-	



External antenna		
S	Signal	Conductor
T	GND	Shielding braid



DESCRIPTIONS OF CIRCUIT BOARD INDICATOR LIGHTS

S	Status
	The LED flashes every 4 seconds: Circuit board waiting.
	The LED flashes rapidly: Command in progress.

D	Fault
	The red LED light remains illuminated for 5 seconds: Current consumption threshold has been exceeded or circuit board has heated up too much during an output command.
	The red LED flashes: drive synchronisation fault.
	The orange LED remains illuminated for several seconds: Backing-up the memory.
	The orange LED flashes rapidly: Movement of a drive not permitted by a sensor action.

W	Wind
	The orange LED remains illuminated: Wind threshold has been exceeded.
	The orange LED flashes rapidly: protection still in progress for 15 minutes after the threshold last being exceeded.

R	Rain
	The orange LED remains illuminated: The rain threshold has been exceeded.
	The orange LED flashes rapidly: protection still in progress for 15 minutes after the threshold last being exceeded.

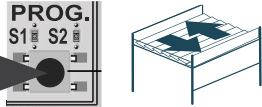
T	Temperature
	The orange LED remains illuminated: the ice threshold has been exceeded. The Control is locked.
	The orange LED flashes rapidly: protection still in progress for 15 minutes after the latest threshold is exceeded. Sensors locked out.

Pergola Tilt RTS Control Box Programming Quick Reference Guide: Semi-Auto


! BEFORE YOU BEGIN: Confirm the Dip Switches are set to the correct position and all wiring is done.

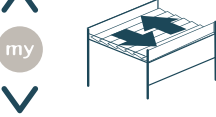


1. Initiate Programming

1.1 **Press & hold the PROG button** on the circuit board until both S1 and S2 LEDs flash. The motor jogs. 

1.2 **Briefly press the PROG button** to select motor S1 or S2 to program. S1 or S2 LED will blink to confirm the motor to be programmed.

1.3 If on a multi-channel RTS control, select the desired channel. 

1.4 **Briefly press UP and DOWN** simultaneously. The motor jogs. 

3. Set the End Limits

3.1 Run the motor to the desired open position.

 3.2 **Briefly press the MY and DOWN buttons.** The motor will run to the in (closed) limit.

Do not interrupt the movement: the control will automatically detect the in limit.

2. Check the Direction of Operation

2.1 **Press the UP button** to confirm the pergola opens. 

The direction of rotation is correct

If the pergola closes, the direction of rotation is incorrect.

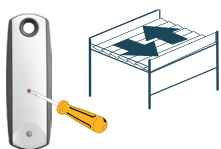
2.2 **Press & hold the MY button** until the motor jogs. The rotation direction has been modified. 

4. Snow/Ice Position and Validation


4.1 Use the **UP or DOWN** buttons to run the motor to the desired position for ice/snow. (This position must be set even if Dip Switch 4 is off)

4.2 **Press & hold the MY button** until the motor jogs to confirm the settings. 

5. Pairing the Remote Control

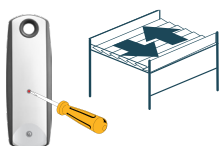
 **Briefly press the PROGRAMMING button** on the back of the transmitter. The motor jogs.

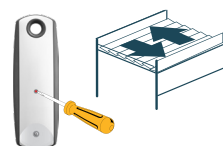
6. Programming Motor 2

 Repeat steps from 1.2 through step 4. **NOTE:** On a multi-channel RTS control, select the desired channel on step 1.3

Add or Delete a Control or Sensor

a) **Press & hold the PROG button** on the back of Control 1 until the pergola jogs. b) **Briefly press the PROG button** on the back of Control 2 until the pergola jogs.

 **CONTROL 1:** Previously programmed control

 **CONTROL 2:** Second control to be added or deleted.

The procedure to delete a RTS control or sensor is the same.

Resetting the Control Box to Factory Mode

To completely clear the control's memory:



Press the PROG button on the circuit board for more than 7 seconds until all the indicator lights on the circuit board light up.