

Pergola Motors

Pergola Tilt, 24V 150mm 0° (Nom Force: 2500 N)

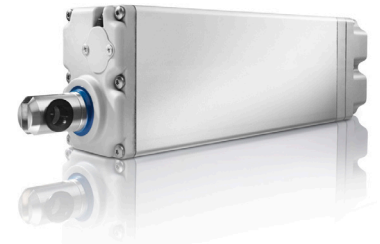
Item #: 1230032

Pergola Tilt, 24V 300mm 0° (Nom Force: 1500 N)

Item #: 1240262

OVERVIEW:

Introducing the Pergola Tilt motor, a perfect choice to motorize tilting-slat Pergola systems. Available in two stroke lengths, they save time during the manufacturing and installation process with flexible, reliable features. Increase opportunities to create the ideal outdoor living space featuring convenient, connected protection from the elements.



TECHNICAL SPECIFICATIONS:

Pergola Tilt, 24V 150

- Max. stroke length: 150mm
- Voltage: 24 V DC \pm 5%
- Speed: Full load 3mm/sec (0.12 in./s)
No load 4mm/sec (0.16 in./s)
- Torque: 2500N
- IP: 66
- Black cable: 1.5m VVF, removable (connector)
- Operating Temp: 14°F to 140°F (-10°C / +60°C)

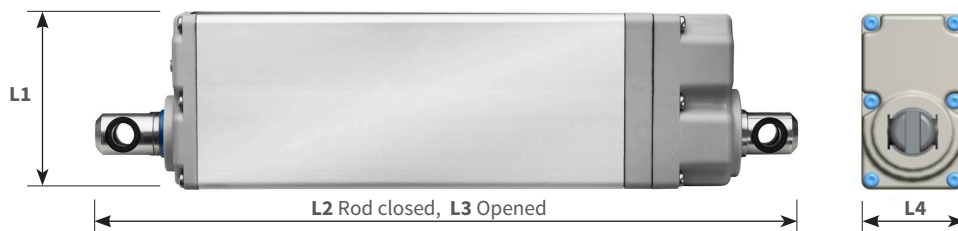
Pergola Tilt, 24V 300

- Max. stroke length: 300mm
- Voltage: 24 V DC \pm 5%
- Speed: Full load 6mm/sec (0.24 in./s)
No load 9mm/sec (0.35 in./s)
- Torque: 1500N
- IP: 66
- Black cable: 5m RNF, not removable (embedded)
- Operating Temp: 14°F to 140°F (-10°C / +60°C)

COMMON CHARACTERISTICS:

- Mounting style: 10mm eyelets
- Thermal run time: 6 minutes
- Number of wires: 6
 - Motor Power: Blue, Brown
 - Encoder Power: Red+, Black -
 - Encoder Signal: Yellow, Green
- Limits: Internal fixed micro-switch
- Material: Aluminum

DIMENSIONS:



FEATURES SUMMARY:

- Integrated limits
- Robust construction

MOTORS	NOMINAL FORCE (N)	NOMINAL SPEED (m/s)	L1 (mm)	L2 (mm)	L3 (mm)	L4 (mm)	STROKE LENGTH (mm)	RATED POWER (W)	RATED CURRENT (A)
TILT 150	2500	3	78	290	440	53	150	45	1.9
Tilt 300	1500	6	80	441	741	45	300	35	1.45