

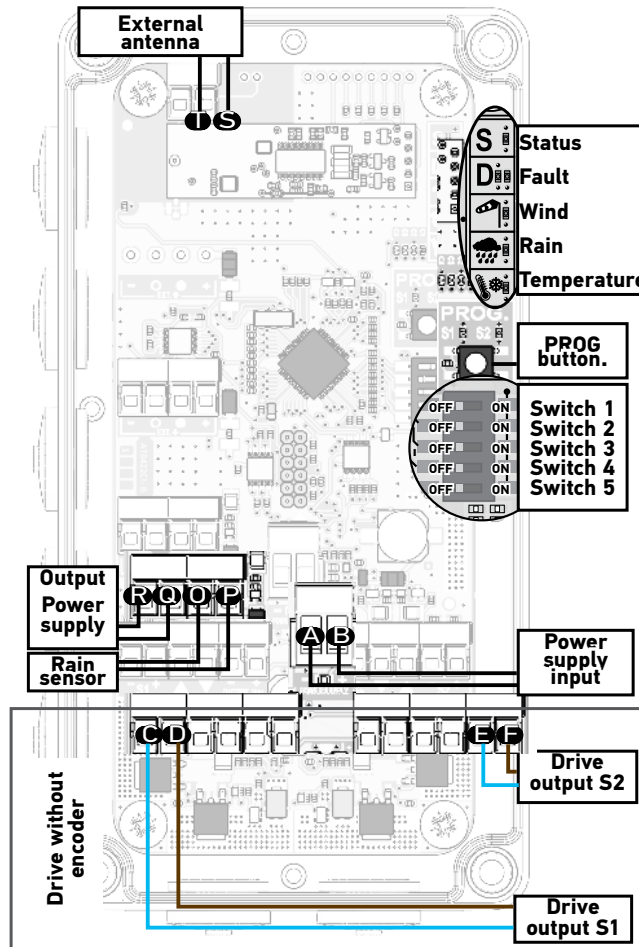
Pergola Tilt RTS Control Box Connection Quick Start Guide

BEFORE YOU BEGIN: Power must be cut before wiring or making any wiring changes.

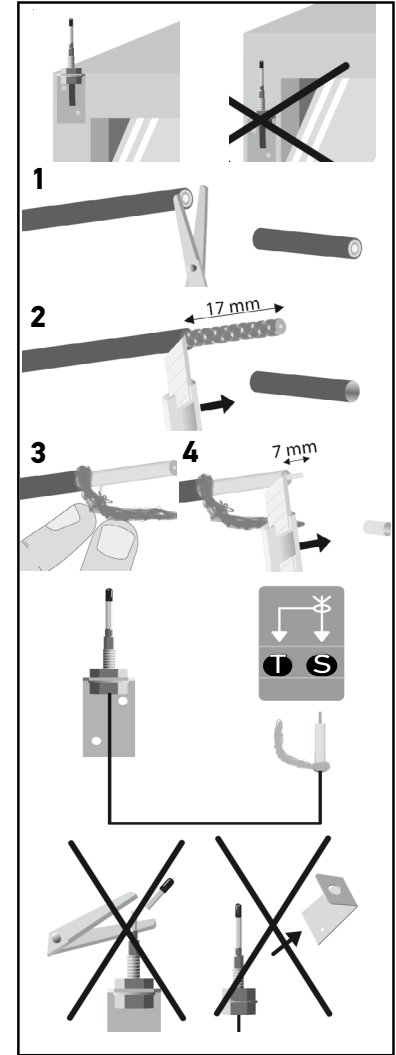
DESCRIPTION & CONNECTIONS

Switch 1	
ON	Drive with coder sensor
OFF	Drive without coder sensor
Switch 2 (only if switch 1 is set to ON)	
ON	Activates synchronization S1 and S2
OFF	Deactivates synchronization S1 and S2
Switch 3	
ON	5.5 A max. per output
OFF	3 A max. per output
Switch 4	
ON	Activates the temperature sensor
OFF	Deactivates the temperature sensor
Switch 5	
ON	Open 50% in the event of wind
OFF	Open 100% in the event of wind

Power Supply Input			
A	-	24 Vdc power supply input (SELV)	
B	+		
Drive output 1			
Blue	C	-	24 Vdc - 3A/5.5A drive: Maximum current according to switch 3
Brown	D	+	
Drive output 2			
Blue	E	-	24 Vdc - 3A/5.5A drive: Maximum current according to switch 3
Brown	F	+	
Rain Sensor			
O	Contact	Dry contact input	
P	Common		
Q	-	Power supply output:	
R	+	24 Vdc/- 300 mA	



External antenna		
S	Signal	Conductor
I	GND	Shielding braid



DESCRIPTIONS OF CIRCUIT BOARD INDICATOR LIGHTS

S	Status
The LED flashes every 4 seconds:	Circuit board waiting.
The LED flashes rapidly:	Command in progress.

D	Fault
The red LED light remains illuminated for 5 seconds:	Current consumption threshold has been exceeded or circuit board has heated up too much during an output command.
The red LED flashes:	drive synchronisation fault.
The orange LED remains illuminated for several seconds:	Backing-up the memory.
The orange LED flashes rapidly:	Movement of a drive not permitted by a sensor action.

W	Wind ⁽¹⁾
The orange LED remains illuminated:	Wind threshold has been exceeded.
The orange LED flashes rapidly:	protection still in progress for 15 minutes after the threshold last being exceeded.

R	Rain ^{(1) (2)}
The orange LED remains illuminated:	The rain threshold has been exceeded.
The orange LED flashes rapidly:	protection still in progress for 15 minutes after the threshold last being exceeded.

T	Temperature ^{(1) (2)}
The orange LED remains illuminated:	the ice threshold has been exceeded.
The orange LED flashes rapidly:	protection still in progress for 15 minutes after the latest threshold is exceeded.

Pergola Tilt RTS Control Box Programming Quick Reference Guide



BEFORE YOU BEGIN:
Check the motor power plug to ensure it is fully inserted and the retainer caps screws are in flush.

1. Initiate Programming

1.1 **Press & hold the PROG button** on the circuit board until both S1 and S2 LEDs flash. The motor jogs.

1.2 **Briefly press the PROG button** to select motor S1 or S2 to program. S1 or S2 LED will light to confirm the motor to be programmed.

1.3 On a multi-channel RTS control, select the desired channel.

1.4 **Briefly press UP and DOWN** simultaneously. The motor jogs.

3. Set the End Limits

Briefly press the MY and DOWN buttons at the same time to initiate the end limit (self-learning) process.

Do not interrupt the movement: the drive will automatically search for its end limits.

2. Check the Direction of Operation

2.1 **Press the UP button** to confirm the pergola opens.

The direction of rotation is correct

If the pergola closes, the direction of rotation is incorrect.

2.2 **Press & hold the MY button** until the motor jogs. The rotation direction has been modified.

4. Snow/Ice Position and Validation

4.1 Use the **UP or DOWN** buttons to run the motor to the desired position for ice/snow.

4.2 **Press & hold the MY button** until the motor jogs to confirm the settings.

or

5. Pairing the Remote Control

Briefly press the PROGRAMMING button on the back of the transmitter. The motor jogs.

6. Programming Motor 2

Repeat steps from 1.2 through step 4. **NOTE:** On a multi-channel RTS control, select the desired channel on step 1.3

Add or Delete a Control or Sensor

a) **Press & hold the PROG button** on the back of Control 1 until the pergola jogs. b) **Briefly press the PROG button** on the back of Control 2 until the pergola jogs.

CONTROL 1: Previously programmed control **CONTROL 2:** Second control to be added or deleted.

The procedure to delete a RTS control or sensor is the same.

Resetting the Control Box to Factory Mode

Clearing the control box's memory completely:

> 7 s.

Press the PROG button on the circuit board for more than 7 seconds until all the indicator lights on the circuit board light up.

