

Roll Up 28 WF RTS Li-ion II

EN Instructions

ORIGINAL INSTRUCTIONS

These instructions apply to all Roll Up 28 WF RTS Li-ion II drives, the different versions of which are available in the current catalogue.

CONTENTS

1. Prior information.....	4
1.1. Field of application.....	4
1.2. Liability	4
2. Installation.....	5
2.1. Assembly	5
2.2. Wiring	6
2.3. Commissioning	7
2.4. Tips and advice on Installation.....	10
3. Use and maintenance	15
3.1. Mode selection: Roller or Tilting Mode.....	15
3.2. Controlling Up, Down, My: in Roller mode	15
3.3. Controlling Up, Down, My: in Tilting mode.....	16
3.4. Favourite position (my).....	16
3.5. Adjusting the speed.....	17
3.6. Tips and advice on operation	18
3.7. Replacing the battery.....	20
4. Technical data	23

GENERAL INFORMATION

Safety instructions

 **DANGER**

Indicates a danger which may result in immediate death or serious injury.

 **WARNING**

Indicates a danger which may result in death or serious injury.

 **PRECAUTION**

Indicates a danger which may result in minor or moderate injury.

 **CAUTION**

Indicates a danger which may result in damage to or destruction of the product.

1. PRIOR INFORMATION

1.1. Field of application

The R28 drives are designed to drive all types of interior blinds except pantographs.

The installer, who must be a motorisation and home automation professional, must ensure that the motorised product is installed in accordance with the standards in force in the country in which it is installed such as EN 13120 relating to interior blinds.

1.2. Liability

Before installing and using the drive, please read **these instructions carefully**.

In addition to the instructions provided in this guide, please also comply with the instructions provided in the attached **Safety instructions** document.

The drive must be installed by a home motorisation and automation professional, in accordance with Somfy's instructions and the applicable regulations in the country of installation.

Any operation of the drive outside the field of application described above is prohibited. Such use, and any failure to comply with the instructions given in this guide and in the attached **Safety instructions** document, absolves Somfy of any liability and invalidates the warranty.

After installing the drive, the installer must inform his customers of the operating and maintenance conditions for the drive and must provide them with the operating and maintenance instructions, and the attached **Safety instructions** document. Any After-Sales Service operation on the drive must be performed by a home motorisation and automation professional.

Never begin installing without first checking the compatibility of this product with the associated equipment and accessories. If in doubt when installing this product and/or to obtain additional information, contact a Somfy representative or visit the website **www.somfy.com**.

2.INSTALLATION

△ CAUTION

- These instructions are mandatory for the home motorisation and automation professional installing the drive.
- Never drop, knock or puncture the drive or immerse it in liquid.
- Install an individual control point for each drive.

ⓘ NOTICE

Make sure that LED, programming button and input connection remain visible and easily accessible after installation.

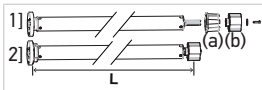
2.1.Assembly

2.1.1.Preparing the drive

△ CAUTION

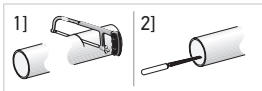
Roll Up 28 WF RTS Li-ion II : interior diameter of the tube has to be $\varnothing 26.6$ mm or greater.

- 1] Fit the crown (a) and drive wheel (b) to the motor.
- 2] Measure the length (L) between the end of the drive wheel and the head end.



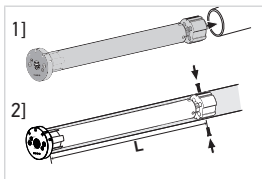
2.1.2.Preparing the tube

- 1] Cut the tube to the required length.
- 2] Deburr the tube and remove the debris.



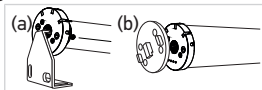
2.1.3. Assembling the drive-tube

- 1] Slide the drive into the tube. Insert the wheel by aligning the wheel to the tube profile. Insert the drive half way and then slide the crown down the drive and insert it in the tube. Finally, push the motor inside the tube.
- 2] Not required, but if needed, fix the tube to the drive with self-tapping screws or steel pop rivets depending on the dimension (L).



2.1.4. Mounting the tube-drive assembly on the brackets

- (a) Standard bracket.
- (b) Drive plate for specific bracket.



① NOTICE

For optimal radio reception, the motor antenna should be kept straight and should be positioned outside of headrail (if used).

2.2. Wiring



PRECAUTION

- To ensure electrical safety, this Class III motor must be powered by a «SELV» voltage source (Safety Extra Low Voltage).
- The battery level must be below 30% before shipping by air.



WARNING

- Use power charger (recommended by Somfy) to charge the drive battery.
- Ensure battery is fully charged prior to installation on site.
- Before setting, it is necessary to charge the battery only if the LED blinks red 5 times when you press any button on the paired control point.

- 1] Connect the charger to the drive.

2] When charging is complete, disconnect and store charger for later use.

LED illuminates	Behaviour
Solid Red LED.	Charging.
Green LED blinks twice every 10 seconds.	Charging is near completion.
Solid Green.	Charging is complete.

NOTICE

The drive will go back to sleep if left untouched for 15 minutes.

2.3.Commissioning

NOTICE

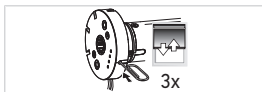
Orange LED blinks continuously in setting mode.

Green LED blinks once when any order from paired remote is received.

2.3.1.Waking up the drive

For initial unpackaging of drive, wake up the drive by briefly pressing the drive head programming button or plugging on the charger.

→The motorised product briefly moves up and down 3 times and LED lights orange.



2.3.2.Pre-programming the control point

Press the **Up** and **Down** buttons simultaneously on the control point:

→The motorised product moves up and down and the control point is temporarily programmed.



2.3.3. Checking the direction of rotation

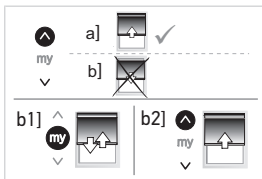
Press the **Up** button on the control point:

a] If the motorised product rises, the direction of rotation is correct: move onto **Setting the end limits** [► 8]

b] If the motorised product lowers, the direction of rotation is incorrect: move onto the next step.

b1] Press the **My** button on the control point until the motorised product moves up and down: The direction of rotation has been modified and green LED blinks 5 times.

b2] Press the **Up** button on the control point to confirm the direction of rotation.

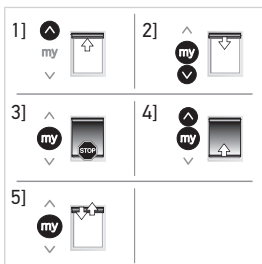


2.3.4. Setting the end limits

NOTICE

The end limits can be set in any order.

- 1] Press and hold the **Up** button to move the motorised product to the desired up position. If necessary, adjust the up position using the **Up** or **Down** buttons.
- 2] **To memorize the up limit:** Press the **My** and **Down** buttons simultaneously and release once the motorised product begins to move. The up limit is now memorized and green LED blinks 5 times.
- 3] Press the **My** button when the motorised product reaches the desired down position. If necessary, adjust the down position using the **Up** or **Down** buttons.
- 4] **To memorize the down limit:** Press the **My** and **Up** buttons simultaneously and release when the motorised product begins to move. The down limit is now



memorized. The motorised product moves up and will stop at its upper limit and green LED blinks 5 times.

- 5] **To confirm and complete limit programming:** Press and hold the **My** button until the motorised product briefly moves up and down. The end limits are now recorded.

2.3.5. Activating/Deactivating "RTS" radio technology when control point is temporarily preprogrammed (not paired) to the motorised product

NOTICE

This function is used to deactivate the radio transmission to save the battery life during shipment, or when the product will not be used for an extended amount of time (eg: storage).

- 1] To deactivate the "RTS" Radio Technology Somfy, press the **Up**, **My** and **Down** buttons simultaneously, until the motorised product briefly moves up and down once and green LED blinks 5 times.
- 2] To activate the "RTS" Radio Technology Somfy, briefly press the drive head programming button, the motorised product briefly moves up and down twice.



2.3.6. Recording "Pairing" the control point

After recording the end limits:

Briefly press the control point **Prog.** button.

→ The motorised product briefly moves up and down to confirm pairing.

The control point is recorded "paired" to the motorised product and green LED blinks 5 times.



2.4. Tips and advice on Installation

2.4.1. Questions about the drive?

Observations	Possible causes	Solutions
The motorised product does not operate.	Drive battery is low and requires charge. Red LED blinks 5 times when any button of a paired control point is pressed.	Plug in the charger.
	The control point battery is low. LED doesn't light when any button of a paired control point is pressed.	Check the battery and replace it as required.
	The control point is not compatible or not programmed. LED doesn't light when any button of control point is pressed.	Check the compatibility or pair the control point as required referring to <u>Adding/Deleting Somfy control points</u> [▶ 19].
	An obstacle hinders the movement of the motorised product. The Red LED lights fixed on.	Remove the obstacle.
	Drive position is out of the end limits. Red LED blinks 2 times intermittently and continually.	Proceed to <u>Setting the end limits</u> [▶ 8].
	Motor is neither set nor paired. Orange LED lights fixed on.	Proceed to <u>Commissioning</u> [▶ 7].
	The thermal protection has activated. LED blinks red continuously.	Wait for the drive to cool down (LED will switch off)

Observations	Possible causes	Solutions
The motorised product stops too soon.	The end limits are incorrectly set.	Reset the end limits.
	The motorised product has exceeded recommended weight limit.	Replace the motorised product.
	Battery is low. Red LED blinks 5 times when any button of a paired control point is pressed.	Charge the battery.
Setting is not allowed. The drive moves briefly 3 times in one direction and 3 times in the other direction. Red LED blinks 3 times and 3 times intermittently.	Maximum number of control points reached.	Erase control points from memory to add a new control point referring to <u>Erasing control points from memory</u> [▶ 13]
	Maximum/minimum value of the setting is reached.	Perform correct setting.
	End limits are too close	Readjust the end limits referring to <u>Readjusting the end limits</u> [▶ 11].
Red LED blinks slowly for 3 seconds before and after motor running.	Battery is low. Battery capacity is less than or equal to 5%.	Charge the battery.

2.4.2. Readjusting the end limits



CAUTION

Control point must be paired to the motorised product.

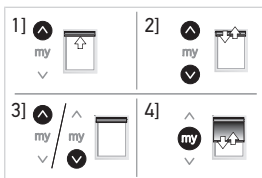


NOTICE

Orange LED blinks slowly until the new end limit is recorded.

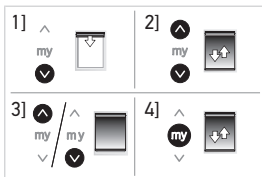
2.4.2.1. Readjusting the upper end limit

- 1] Briefly press the **Up** button, to move the motorised product to the upper end limit.
- 2] Press and hold the **Up** and **Down** buttons simultaneously until the motorised product briefly moves Up and Down.
- 3] Press and hold the **Up** or **Down** button to move the motorised product to the new desired position.
- 4] To confirm the new position press and hold the **My** button until the motorised product briefly moves up and down and green LED blinks 5 times.



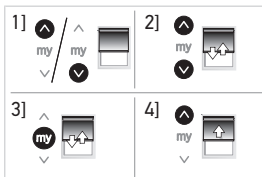
2.4.2.2. Readjusting the lower end limit

- 1] Briefly press the **Down** button to move the motorised product to the lower end limit.
- 2] Press and hold the **Up** and **Down** buttons simultaneously until the motorised product briefly moves up and down.
- 3] Press and hold the **Up** or **Down** button to move the motorised product to the new desired position.
- 4] To confirm the new position press and hold the **My** button until the motorised product moves up and down and green LED blinks 5 times.



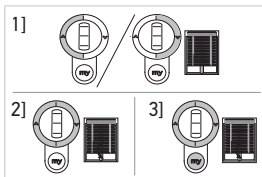
2.4.3. Modifying the drive rotation direction

- 1] Using the **Up** or **Down** button on the control point, move the motorised product away from the end limits.
- 2] Press and hold the **Up** and **Down** buttons simultaneously until the motorised product briefly moves up and down and orange LED starts to blink slowly.
- 3] Press the **My** button until the motorised product briefly moves up and down to reverse the rotation direction and green LED blinks 5 times.
- 4] Press the **Up** button to check the new rotation direction. The drive rotation direction is reversed.



2.4.4. Modifying the wheel rotation direction

- 1] Using the **Up** or **Down** button on the control point, move the motorised product away from the end limits.
- 2] Press and hold the **Up** and **Down** buttons simultaneously until the motorised product briefly moves up and down and orange LED starts to blink slowly.
- 3] Press the **Up**, **My** and **Down** buttons simultaneously, until the motorised product briefly moves up and down, wheel rotation is reversed and green LED blinks 5 times.



2.4.5. Erasing control points from memory

To delete all the programmed control points, press and hold the drive head programming button until the motorised product briefly moves up and down twice.

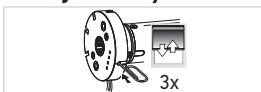


→ All programmed control points are deleted and green LED blinks 5 times.

2.4.6. Erasing the memory of the drive (factory default)

To reset the drive, press and hold the drive head programming button until the motorised product briefly moves up and down 3 times.

→ All the settings are erased. Green LED blinks 5 times then orange LED is fixed on.



2.4.7. Temporary sleeping mode

⚠ CAUTION

The motorised product must be programmed.

ⓘ NOTICE

The drive will not respond to any control points commands for 15 minutes

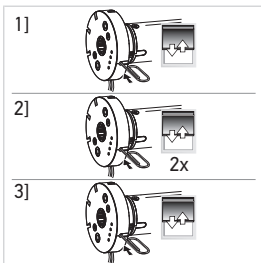
1] Press and hold the drive head programming button until the motorised product briefly moves up and down.

2] Briefly press the drive head programming button, the motorised product briefly moves up and down twice.

→ "Sleeping mode" is activated, green LED blinks 5 times to confirm, then orange LED blinks every second as long as the drive is in the temporary sleeping mode.

3] To deactivate the "Sleeping mode", briefly press the drive head programming button.

→ The motorised product briefly moves up and down, the control point commands are enabled. Green LED blinks 5 times.



3. USE AND MAINTENANCE

i NOTICE

This drive does not require any maintenance operations.

3.1. Mode selection: Roller or Tilting Mode

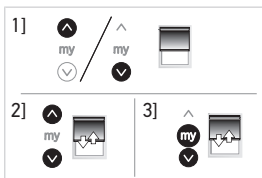
The drives are designed to work in 2 modes: Tilting mode or Roller mode. This feature allows the drive to be set according to the type of application.

i NOTICE

The drive is set (by default) to work in Roller mode.

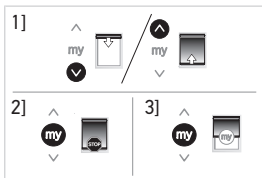
- 1] Move the motorised product away from the end limits.
- 2] Simultaneously press and hold the **Up** and **Down** buttons until the motorised product briefly moves up and down.
- 3] Press and hold the **My** and **Down** buttons simultaneously until the motorised product briefly moves up and down to change from Roller mode to Tilting mode.

→ Green LED blinks twice to indicate that the drive is in **Roller mode** or three times to indicate that the motor is in **Tilting mode**.



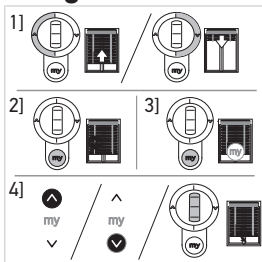
3.2. Controlling Up, Down, My: in Roller mode

- 1] To move the motorised product from a limit to the other limit, briefly press the **Up** or **Down** button.
- 2] To stop the motorised product, briefly press the **My** button.
- 3] (If a My position is recorded) To move the motorised product to the My position, briefly press the **My** button.



3.3. Controlling Up, Down, My: in Tilting mode

- 1] To move the motorised product from a limit to the other limit, briefly press (less than 0,5s) the **Up** or **Down** button.
- 2] To stop the motorised product, press the **My** button.
- 3] (If a My position is recorded) To move the motorised product to the My position, briefly press the **My** button. The motorised product automatically travels to the down end limit (first) then to the My position.
- 4] To tilt the slats, press and hold the **Up** or **Down** button or use the scroll of the remote control, until the slats reach the desired position.

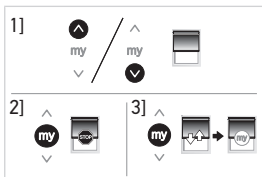


3.4. Favourite position (my)

NOTICE

An intermediate stop, which is called the "favourite (my) position", is different from the upper and lower positions.

- 1] To set this function, move the motorised product to the desired position using the **Up** or **Down** button.
- 2] Briefly press **My** button to stop the motorised product.
- 3] Press and hold the **My** button until the motorised product moves up and down.
 - Favourite (my) position is set and green LED blinks 5 times.



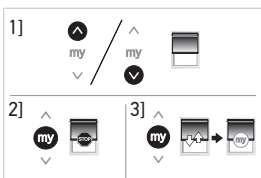
3.4.1. Modifying the favourite (my) position

NOTICE

Only one favourite (my) position is permitted.

- 1] Use the **Up** or **Down** button to move the motorised product to the NEW desired favourite (my) position.
- 2] Press the **My** button to stop the motorised product.
- 3] Press and hold the **My** button until the motorised product briefly moves up and down.

→ The new favourite (my) position is programmed and green LED blinks 5 times.



3.5. Adjusting the speed

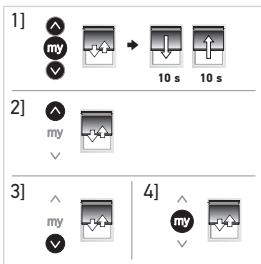
NOTICE

Orange LED blinks slowly in this mode.

- 1] Move the motorised product away from the end limits. Press and hold the **Up**, **My** and **Down** buttons simultaneously, until the motorised product briefly moves up and down once.

⇒ The motorised product moves up and down automatically in 10 second cycles and green LED blinks 5 times to validate entering in speed adjustment mode.

- 2] To increase the speed, press and hold the **Up** button until the motorised product briefly moves up and down and green LED blinks 5 times. Repeat as needed.



① **NOTICE**

Maximum speed is reached when the motorised product moves briefly 3 times in one direction and 3 times in the other direction. Red LED blinks 3 times and 3 times intermittently.

- 3] To decrease the speed, press and hold the **Down** button until the motorised product briefly moves up and down. Repeat as needed.

① **NOTICE**

Minimum speed is reached when the motorised product moves briefly 3 times in one direction and 3 times in the other direction.

- 4] To confirm the new speed, press and hold the **My** button until the motorised product briefly moves up and down and green LED blinks 5 times.

3.6. Tips and advice on operation

3.6.1. Questions about the product?

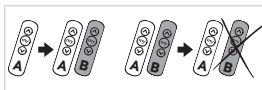
Observations	Possible causes	Solutions
The motorised product does not operate.	The control point battery is low. LED doesn't light when any button of a paired control point is pressed.	Change control point battery as required.
	Drive battery is low and requires charge. Red LED blinks 5 times when any button of a paired control point is pressed.	Plug in the charger.

Observations	Possible causes	Solutions
	RTS is deactivated. LED doesn't light when any button of a paired control point is pressed.	Press the drive programming button.
	Thermal protection of the drive is on (Red LED blinks slowly).	Wait for the drive to cool down (Red LED will stop blinking when drive is ready to use).
The motorised product stops before its end limit.	The drive has detected an obstacle (solid Red LED).	Move the motorised product in the other direction.

3.6.2. Adding/Deleting Somfy control points

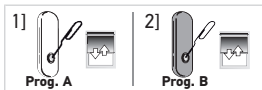
① NOTICE

Orange LED blinks slowly when adding or deleting a remote control.



3.6.2.1. Using a control point that has been previously programmed to the motorised product

- 1] Press and hold the **Prog.** button (A) on the programmed control point until the motorised product briefly moves up and down.



⇒ Green LED blinks 5 times then orange LED blinks slowly.

- 2] Quickly press the **Prog.** button (B) on the control point to add or delete.

→ Green LED blinks 5 times.

3.6.2.2. Using the Programming button on the drive head

- 1] Press and hold the drive head programming button until the motorised product briefly moves up and down.



⇒ Green LED blinks 5 times then orange LED blinks slowly.

- 2] Quickly press the **Prog.** button (B) on the control point to add or delete.

→ Green LED blinks 5 times.

3.6.3. Disabling/Activating “RTS” radio technology when control point is definitively programmed

i NOTICE

Disabling the radio transmission saves battery life during shipment or for a long period of non-use (eg storage). The following steps can only be performed in “User” mode.

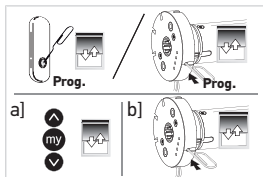
Press and hold the programmed control point **Prog.** button or the drive head programming button until the motorised product briefly moves up and down and green LED blinks 5 times. (The drive is in programming mode).

TO DEACTIVATE RTS RADIO TECHNOLOGY:

a] Press the **Up**, **My** and **Down** simultaneously until the motorised product briefly moves up and down once and green LED blinks 5 times.

TO ACTIVATE RTS RADIO TECHNOLOGY:

b] Briefly press the drive head programming button or plug in the charger, the motorised product briefly moves up and down once and green LED blinks 5 times.



3.7. Replacing the battery

i NOTICE

Contact Somfy for battery model's recommendation.



PRECAUTION

Replacement of the battery by an identical model only must be carried out by a motorisation and home automation professional.



CAUTION

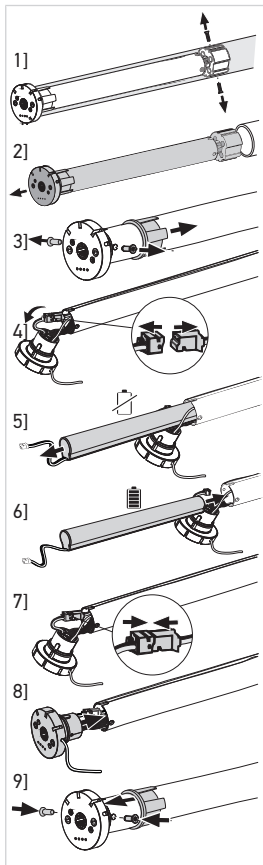
- *Do not use tools that could damage the drive when replacing the battery.*
- *Do not cut or damage the antenna cable.*

- 1] If the drive is fixed to the tube, disassemble the motorised product to access the self-tapping screws or steel pop rivets (drive wheel side) and remove them.
- 2] Grab the motor head and pull out the drive by sliding it out of the motorised product tube.
- 3] If necessary, offset the ring gear on the actuator tube to access the two T6 torx screws or cruciform screws and unscrew the motor head.
- 4] Remove carefully the motor head from the tube taking care not to damage the wires and disconnect the battery.
- 5] Grab and remove the used battery by sliding it out of the tube taking care not to damage the wires.
- 6] Insert and slide the new battery into the drive tube, leaving the battery connector accessible from the outside of the tube.
- 7] Connect the new battery.
- 8] Insert the motor head using the keying notches on the drive tube taking care not to cut off the wires.
- 9] Screw the motor head using the two T6 torx screws or cruciform screws to the drive tube.

→ Restart the installation referring to Assembling the drive-tube.

① NOTICE

if necessary, readjust the end limits referring to [Readjusting the end limits](#) [▶ 11]



4. TECHNICAL DATA

Power supply	12 Vdc SELV
Radio frequency	433.42 MHz
Torque	1.1 N·m
Speed	10-28 RPM
Electrical insulation	III
Minimum distance between limits	1 turn
Operating temperature	0° to +60°C
Protection rating	IP20 (for indoor use only)
Maximum number of associated control points	12



NOTICE

For additional information on the technical data for this drive contact your Somfy representative.



Please separate storage cells and batteries from other types of waste and recycle them via the local collection facility.



We care about our environment. Do not dispose of the appliance with usual household waste. Give it to an approved collection point for recycling.



SOMFY ACTIVITES SA, F-74300 CLUSES as manufacturer hereby declares that the drive covered by these instructions and used as intended according to these instructions is in compliance with the essential requirements of the applicable European Directives and in particular of the Machinery Directive 2006/42/EC, and the Radio Directive 2014/53/EU.

The full text of the EU declaration of conformity is available at www.somfy.com/ce.

Philippe Geoffroy, Approval manager, acting on behalf of Activity director,
Cluses, 09/2021.

SOMFY ACTIVITES SA

50 avenue du Nouveau Monde

F-74300 CLUSES

www.somfy.com

somfy®



5155563A

