



RS485 SETTING TOOL

Installation guide



Ref. 5101887A

HOME MOTION by
somfy[®]

CONTENTS

1. Introduction	2	5. Commissioning	5
2. Safety	2	5.1. Switch on the RS485 SETTING TOOL	
3. Description & Installation	3	5.2. Somfy RS485 Node discovery section	
3.1. Description		5.3. Setting tool parameters section	
3.2. Battery installation			
4. Wiring	5	6. Tips & recommendations	9
4.1. Connect the RS485 setting tool to the RS485 product		7. Technical data	9

1. INTRODUCTION

The RS485 SETTING TOOL is a smart digital system which enables the setting of SOMFY RS485 products (Somfy RS485 motors and interfaces).

This was designed to ease the integration and settings for OEMs & façade makers, but also to ease the installation and/or maintenance for installers thanks to fast connection and intuitive tool thanks to its display.

Moreover, its firmware can be easily updated to allow to have the latest compatibility version in hands.

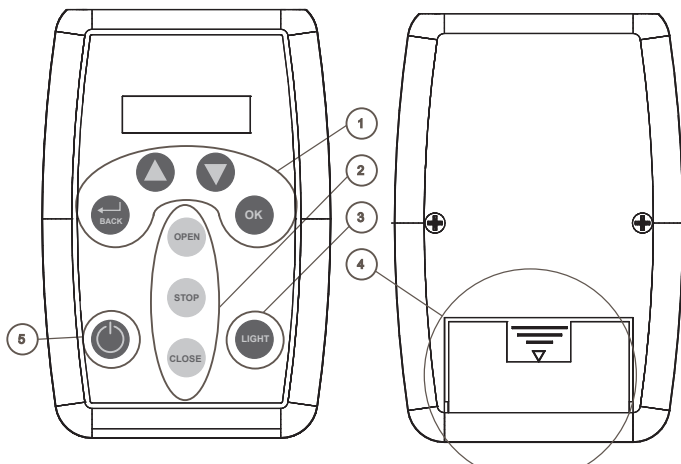
2. SAFETY

- This Somfy product must be installed by a professional motorisation and home automation installer, for whom these instructions are intended.
- Before installation, check that this product is compatible with the associated equipment and accessories.
- These instructions describe how to install, commission and use this product.
- Moreover, the installer must comply with current standards and legislation in the country in which the product is being installed, and inform his customers of the operating and maintenance conditions for the product.
- Any use outside the sphere of application specified by Somfy is not approved. Such use, or any failure to comply with the instructions given herein will invalidate the warranty, and Somfy refuses to accept liability.

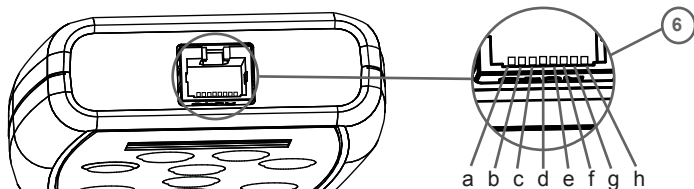
Subject to technical modifications.

3. DESCRIPTION & BATTERY INSTALLATION

3.1. description



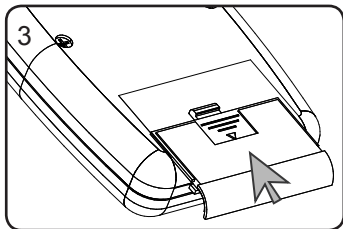
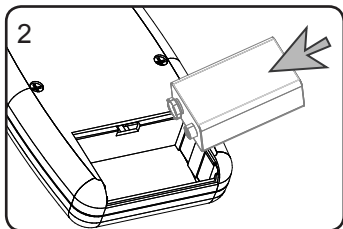
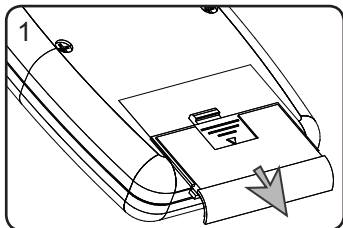
1: Navigation buttons	4: Battery compartment
2: Control buttons	5: On/Off
3: Backlight button	6: RJ45 socket



a: Ground	e: Not used
b: Ground	f: Not used
c: Not used	g: RS485 -
d: Not used	h: RS485 +

3.2. Battery installation

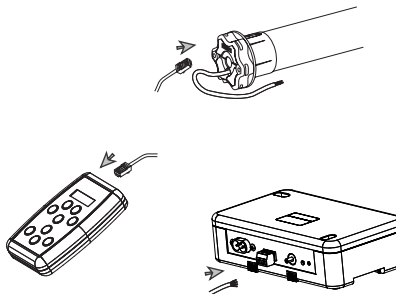
- 1) Remove the battery cover from the back of the RS485 SETTING TOOL.
- 2) Insert the batteries following the polarity indicated.
- 3) Replace the battery cover on the rear of the RS485 SETTING TOOL.



Please separate the storage cells and batteries from other types of waste and recycle them via your local collection facility.

4. WIRING

4.1. Connect the RS485 SETTING TOOL to the RS485 product



Between the RS485 SETTING TOOL and the RS485 product, the cable length should not exceed 10m.

5. COMMISSIONING

5.1. Switch on the RS485 SETTING TOOL

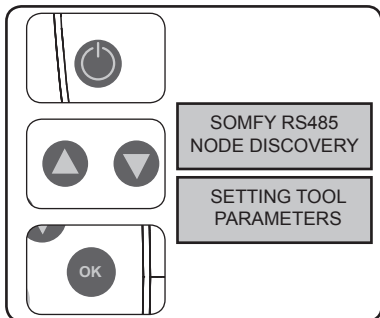


Point to point settings only (this is not a network tool).

1) Press the on/off button to switch on the RS485 SETTING TOOL.

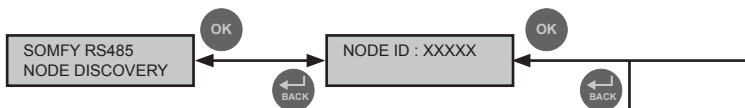
2) Choose the «Somfy RS485 node discovery» function or the «setting tool parameters» function by pressing the up and down buttons.

3) Press the «ok» button to enter in the chosen function.



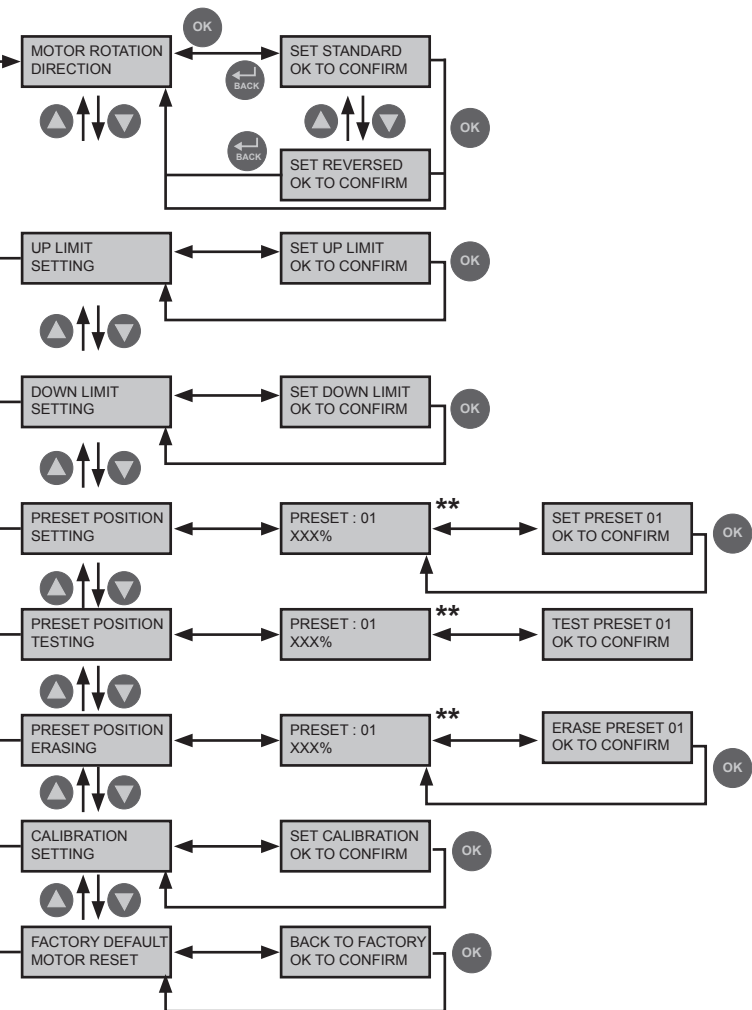
Use the «Up», «Down», «Back» & «Ok» buttons to navigate in the menu.

5.2. Somfy RS485 node discovery section*

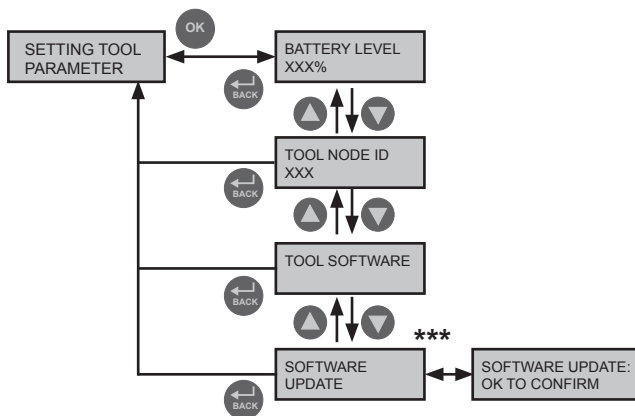


*Example of setting for a RS485 motor

** Select the preset position (1 to 16) with the ▲ ▼ buttons.



5.3. Setting tool parameters section



*** Please contact your local Somfy retailer for the informations about the Software update.

6. TIPS AND RECOMMENDATIONS

Questions on the RS485 SETTING TOOL

Observations	Possible causes	Solutions
The blind does not operate.	The wiring is incorrect.	Check the wiring and modify it if necessary.
	The RS485 SETTING TOOL battery is low.	Check whether the battery is weak and replace it if necessary.
The RS485 SETTING TOOL do not switch on.	The RS485 SETTING TOOL battery is low.	Check whether the battery is weak and replace it if necessary.

7. TECHNICAL DATA

Power supply	9Vdc
Type	ANSI : 1604A IEC : 6LR61
Operating temperature	-10°C to +60°C
Protection rating	IP30
Battery life time	1000 motors setting

Somfy

50 Avenue du Nouveau Monde
BP 152 - 74307 Cluses Cedex
France
T +33 (0)4 50 96 70 00
F +33 (0)4 50 96 71 89

www.somfy.com

Somfy Worldwide

Argentina: Somfy Argentina Tel: +55 11 (0) 4737-3700	Denmark: Somfy Nordic Denmark Tel: +45 65 32 57 93	Indonesia: Somfy Jakarta Tel: +(62) 21 719 3620	Netherlands: Somfy BV Tel: +31 (0) 23 55 44 900	Sweden: Somfy Nordic AB Tel: +46 (0)40 16 59 00
Australia: Somfy PTY LTD Tel: +61 (2) 8845 7200	Export: Somfy Export Tel: +33 (0)4 50 96 70 76 Tel: +33 (0)4 50 96 75 53	Italy: Somfy Italia s.r.l Tel: +39-024847181	Norway: Somfy Nordic Norge Tel: +47 41 57 66 39	Switzerland: Somfy A.G. - Tel: +41 (0) 44 838 40 30
Austria: Somfy GesmbH Tel: +43 (0) 662 / 62 53 08 - 0	Finland: Somfy Nordic AB Finland Tel: +358 (0)9 57 130 230 Fax: +358 (0)9 57 130 231	Japan: SOMFY KK Tel: +81 (0)45 481 6800	Poland: Somfy SP Z.O.O. Tel: +48 (22) 50 95 300	Syria: Somfy Syria Tel: +963-9-55580700
Belgium: Somfy Belux Tel: +32 (0) 2 712 07 70	France : Somfy France Tel. : +33 (0) 820 374 374	Jordan: Somfy Jordan Tel: +962-6-5821615	Portugal: Somfy Portugal Tel. +351 229 396 840	Taiwan: Somfy Development and Taiwan Branch Tel: +886 (0) 2 8509 8934
Brazil: Somfy Brasil Ltda Tel: +55 11 3695 3585	Germany: Somfy GmbH Tel: +49 (0) 7472 930 0	Kingdom of Saudi Arabia: Somfy Saoudi Riyadh : Tel: +966 1 47 23 020 Tel: +966 1 47 23 203 Jeddah : Tel: +966 2 69 83 353	Romania: Somfy SRL Tel: +40 - (0)368 - 444 081	Thailand: Bangkok Regional Office Tel: +66 (0) 2714 3170
Canada: Somfy ULC Tel: +1 (0) 905 564 6446	Greece: SOMFY HELLAS S.A. Tel: +30 210 6146768	Kuwait: Somfy Kuwait Tel: +965 4348906	Russia: Somfy LLC. Tel: +7 495 781 47 72	Tunisia: Somfy Tunisia Tel: +216-98303603
China: Somfy China Co. Ltd Tel: +8621 (0) 6280 9660	Hong Kong: Somfy Co. Ltd Tel: +852 (0) 2523 6339	Lebanon: Somfy Lebanon Tel: +961 (0) 1 391 224	Singapore: Somfy PTE Ltd Tel: +65 (0) 6383 3855	Turkey: Somfy TurkeyMah., Tel: +90 (0) 216 651 30 15
Croatia : Somfy Predstavništvo Tel: +385 (0) 51 502 640	Hungary : Somfy Kft Tel: +36 1814 5120	Malaysia: Somfy Malaysia Tel:+60 (0) 3 228 74743	Slovak republic: Somfy, spol. s r.o. Tel: +421 337 718 638 Tel: +421 905 455 259	United Arab Emirates: Somfy Gulf Jebel Ali Free Zone Tel: +971 (0) 4 88 32 808
Cyprus : Somfy Middle East Tel: +357(0) 25 34 55 40	India: Somfy India PVT Ltd Tel : +(91) 11 4165 9176	Mexico: Somfy Mexico SA de CV Tel: 52 (55) 4777 7770	South Korea: Somfy JOO Tel: +82 (0) 2594 4331	United Kingdom: Somfy Limited Tel: +44 (0) 113 391 3030
Czech Republic: Somfy, spol. s.r.o. Tel: +(420) 296 372 486-7		Morocco: Somfy Maroc Tel: +212-22443500	Spain: Somfy Espana SA Tel: +34 (0) 934 800 900	United States: Somfy Systems Tel: +1 (0) 609 395 1300