

URTSI II Universal RTS Interface



Item #: 1810872

OVERVIEW:

The **Universal RTS Interface II (URTSI II)** is an integration device that allows third party systems to control Radio Technology Somfy® motorized applications. The URTSI II can control up to 16 RTS channels individually and/or as a group through RS232, RS485 and IR. Multiple URTSI IIs can be joined together to control up to 256 channels using the RS485 expansion port. Its simple design allows you to quickly duplicate programming from existing RTS transmitters and easily locate it within the space without the need for line of sight to the motorized window coverings.



TECHNICAL SPECIFICATIONS:

- Power Input: 9 V DC, 200mA-UL approved
- Power Consumption: 20 mA
- Material: ABS
- Dimensions: 3" L x 4" W x 1.75" H
- Maximum Range: 65 feet radius (under optimal conditions)
- Operating Temperature Range: Ambient temperature
- Shipping Weight: 1 lb.
- LED: Bi-color
- Frequency: 433.42 Mhz

FEATURES SUMMARY:

- 16 channels of RTS control per URTSI II
- Communicates with:
 - RS232
 - RS485
 - IR
- Using RS485
 - Control up to 16 URTSI IIs together 256 channels in a system
 - Cascade up to 16 URTSI IIs with one wire
 - Power up to 16 URTSI IIs with one power supply in a system

WHAT'S IN THE BOX:

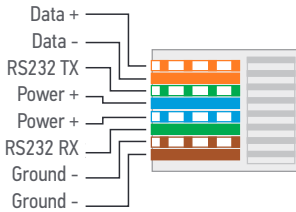
- URTSI II
- Antenna
- Power Supply
- DB9 to RJ45 for RS232

OPTIONAL ACCESSORIES:

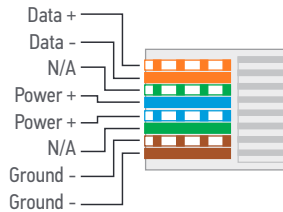
- IR Receiver #9015078
- IR Transmitter #1810498
- DB9 to RJ45 for RS232 #9015028
- DB9 to RJ45 for RS485 #9015029
- RS232 to RS485 Converter #1810496

CABLE PINOUTS:

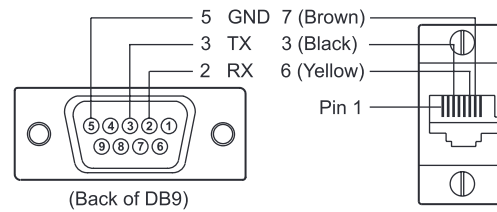
RS232 input or RS485 input



RS485 expansion

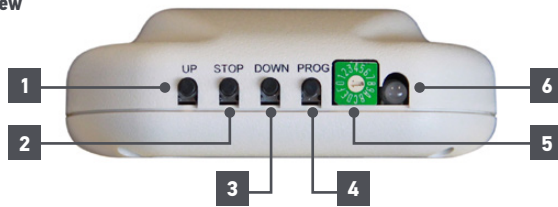


RJ45 to DB9 RS232

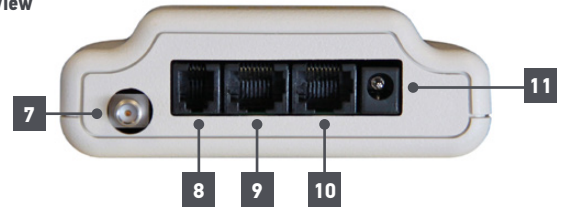


CONNECTIONS AND INDICATORS:

Front View



Back View

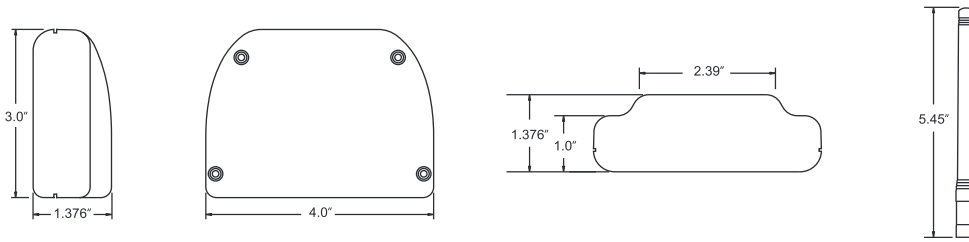


ELEMENT	FUNCTION
1 Up Button	RTS (Test) Up directional button
2 Stop Button	RTS (Test) Stop directional button
3 Down Button	RTS (Test) Down directional button
4 Programming Button	RTS Programming button
5 Rotary Dial	Programming: RTS Channel selector Operation: URTSI II Address selector (RS485) (A-0 = CH 10-16)
6 Bi-Color LED	Green = Power; Red Flash = RTS Transmission

ELEMENT	FUNCTION
7 Antenna	RTS antenna
8 IR Sensor Input	RJ9 port for Somfy's IR Receiver (9015078)
9 RS232 or RS485 Input	RJ45 for RS232 or RS485 serial input
10 RS485 Expansion	RJ45 for RS485 expansion
11 Power	3.5mm jack for included power supply (9V DC 200mA)



DIMENSIONS:



BEST WIRING PRACTICES

The diagram shown below is meant for illustrative purposes to show the connections from product to product. This device could be used in other configurations than shown below.

Please ensure that the limits on the motor have been set and tested. Somfy recommends placing the URTSI II in a central location and that each channel is tested to ensure proper communication between the URTSI II and motorized window covering prior to integration.

Somfy recommends using specified adapters and cables.

