

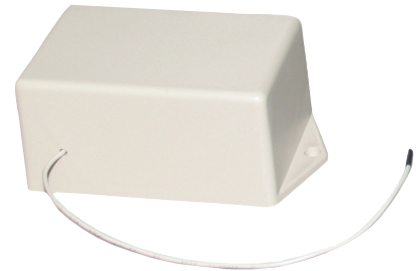
RTS RECEIVER FOR SDN

Installation and Operating Instructions

DESCRIPTION

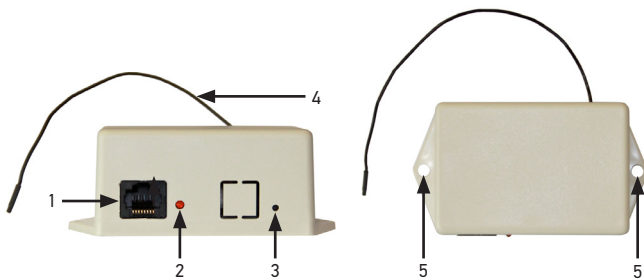
The RTS Receiver for SDN allows RTS communication along Somfy's Digital Network. Using this device, window treatments can be operated locally by hand-held transmitters.

- Each RTS Receiver can memorize up to 5 transmitters / channels.
- Each RTS Receiver can store up to 5 group addresses for SDN.
- The order in which the motors are programmed will correspond to the SDN group address. IE; the first transmitter will be group address 1, the 2nd, group address 2, etc.
- It is recommended that the RTS Receiver is mounted away from any surrounding metal with the antenna pointing up for best reception.



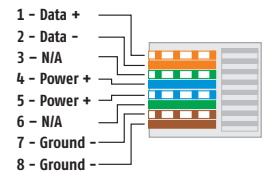
Part Number: 1822294

CONNECTION DIAGRAM



| ELEMENT | FUNCTION |
|--------------------|-------------------------|
| 1 SDN Input | RJ45 port for SDN input |
| 2 LED | LED Indicator |
| 3 Master Reset | Factory Reset |
| 4 RTS Antenna | RTS Antenna |
| 5 Mounting Bracket | Mounting Bracket |

SDN Input



INITIAL SET UP - RTS

1. Connect the RTS Receiver to the power port of the bus power supply. It should be the only device on the SDN busline during setup.
2. Once the RTS Receiver is connected, the LED will be lit until a transmitter is programmed.
3. Press and hold the program button on the telis transmitter until the LED on the receiver turns off. Release the program button and the LED will light again. Press and release the program button on the same transmitter again and the LED will turn off and remain off. This transmitter is now memorized.
4. Connect a PC using a USB to RS485 converter (90152160) to the data port of the bus power supply. Somfy's configuration software should be running. It can be downloaded from: <https://www.somfy.com/support/tools/configuration-tools-software>.

ASSIGN ADDRESS - SDN

1. Select the correct COM port.
2. Click on CONNECT.
3. Click on "Get MTR Addr." The transmitter address will be displayed. This address should be recorded as it is needed to access the control once connected to the Somfy Digital Network.
4. Up to 5 group addresses can also be assigned at this time in locations 1 through 5. It must be a 6 digital hexadecimal numeral (digits 0 - 9, and characters A - F).
5. Click on "Set". Allow 10 seconds for data transfer between PC and Receiver.
6. Click on "Get" under GROUP ADDRESSES and verify the addresses have been updated.



ADDITIONAL PROGRAMMING INSTRUCTIONS

A. RTS Transmitter

PROGRAMMING ADDITIONAL RTS TRANSMITTERS: Press and hold the programming button of a Telis Transmitter previously memorized by the RTS Receiver until the LED on the receiver turns on. Press and release the programming button on the new transmitter or channel. The LED on the receiver will turn off, indicating this transmitter has been memorized. Repeat this procedure for each transmitter or channel, up to 5 total.

DELETING AN RTS TRANSMITTER FROM MEMORY: Press and hold the programming button of a Telis Transmitter previously memorized by the RTS Receiver, but not the one to be removed from memory. Continue holding the button until the LED on the receiver turns on. Press and release the programming button on the transmitter or channel to be removed from memory. The LED on the receiver will turn off, and that transmitter will no longer operate the RTS receiver.

B. SDN Addressees

CHANGING SDN GROUP ADDRESSES: Connect the RTS Receiver to a computer running the Somfy configuration software. Select correct com port, then click on connect. Enter the RTS Receiver address next to "Get MTR Addr". Click on Single then "Get Group Addr". New addresses can be entered in positions 1 - 5. Click on "Set" to confirm.

REMOVING ALL RTS TRANSMITTERS and GROUP ADDRESSES: Press and release the reset button on the RTS Receiver. The LED will turn on, indicating that no transmitters or group addresses are memorized.

MOTOR COMPATIBILITY

The RTS Receiver for SDN is compatible with the following motors:

- Sonesse® 50 RS485 (AC)
- Sonesse® 50 RS485 (DC)
- LT50 RS485 (AC)
- Sonesse® 30 RS485 (DC)

NOTE: Systems that include the Sonesse 50 ILT or the LT50 ILT series motors should not use this product. Please use RTS Receiver (for Legacy ILT Motors) Part #1822541.

Systems that include the animeo IP Building Controller should not use this product. Please use RTS Receiver for animeo IP Part #1822447.

ORDERING INFORMATION

| DESCRIPTION | PART NUMBER |
|----------------------|-------------|
| RTS Receiver for SDN | 1822294 |
| USB to RS485 | 9015260 |
| Bus Power Supply | 1822440 |

SOMFY SYSTEMS INC
SOMFY NORTH AMERICAN HEADQUARTERS
121 Herrod Blvd., Dayton, NJ 08810
P: (800) 22-SOMFY (76639)
NJ: (609) 395-1300
F: (609) 395-1776

FLORIDA
6100 Broken Sound Pkwy. N. W.
Suite 14, Boca Raton, FL 3487
P: (800) 22-SOMFY (76639)
F: (561) 995-7502

CALIFORNIA
15291 Barranca Parkway
Irvine, CA 92618-2201
P: (800) 22-SOMFY (76639)
F: (949) 727-3775

SOMFY ULC
SOMFY Canada Division
5178 Everest Drive Mississauga, Ontario L4W2R4
P: (800) 66-SOMFY (76639)
CN: (905) 564-6446
F: (905) 238-1491

Somfy Systems, Inc. reserves the right to change, update or improve this document without prior notice.