



SDN 0-10V Interface V2

Part Number: 1870857

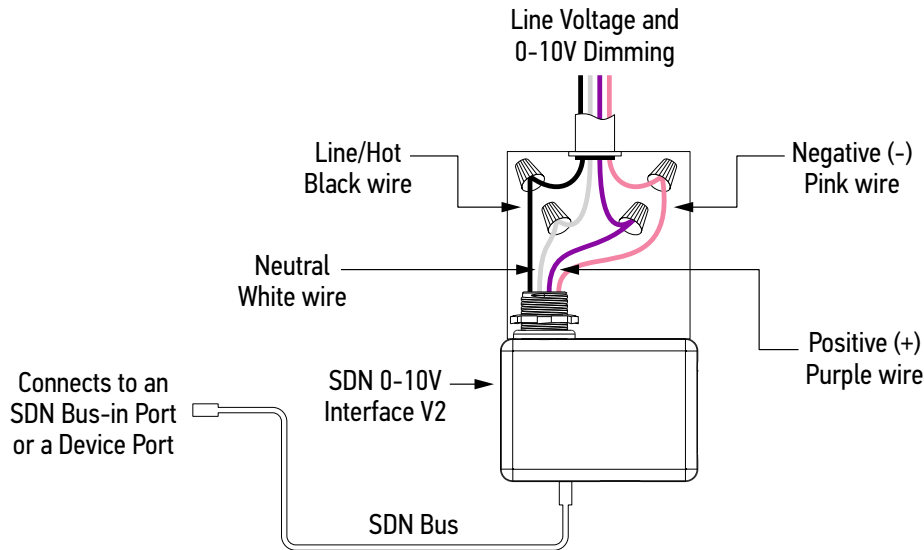
The SDN 0-10V Interface control is a device that will accept an industry standard 0-10V dimming signal and convert it to a Somfy Digital Network™ (SDN) signal. The SDN signal can drive a single or multiple Somfy RS485 motors via assigned group addresses. Key features include:

- One control can drive up to 30 SDN tubular motors.
- Provides 20 SDN Bus Power units

	MOTOR % POSITION	MOTOR INTERMEDIATE POSITION
.750 V	0%	IP1
1.088 V	10%	IP2
2.037 V	20%	IP3
2.973 V	30%	IP4
3.901 V	40%	IP5
4.897 V	50%	IP6
5.813 V	60%	IP7
6.73 V	70%	IP8
7.71 V	80%	IP9
8.66 V	90%	IP10
9.58 V	100%	IP11

	MOTOR % POSITION	MOTOR INTERMEDIATE POSITION
.750 V	0%	IP1
1 V	10%	IP2
2 V	20%	IP3
3 V	30%	IP4
4 V	40%	IP5
5 V	50%	IP6
6 V	60%	IP7
7 V	70%	IP8
8 V	80%	IP9
9 V	90%	IP10

INSTALLATION AND WIRING



SETUP (Please refer to the programming guide on the product page for step-by-step instructions.)

1. Verify that the limits of the RS485 motor are set and the power to the motor is applied.
2. Connect the motor data cable and the 0-10V input according to Figure 1. Do not connect the 120V AC power supply at this time.

***NOTE* VERIFY THE POLARTIY OF THE 0-10V POSITIVE (+) PURPLE AND NEGATIVE (-) PINK INPUTS BEFORE APPLYING POWER.**

3. Connect the SDN 0-10V Interface and turn on the AC power. Then verify that the Main Power LED on the Bus Out jack is solid green. The Bus Activity LED turns on for 10 seconds then turns off.
4. Verify that the motor responds by a single press of the pin-hole push button.

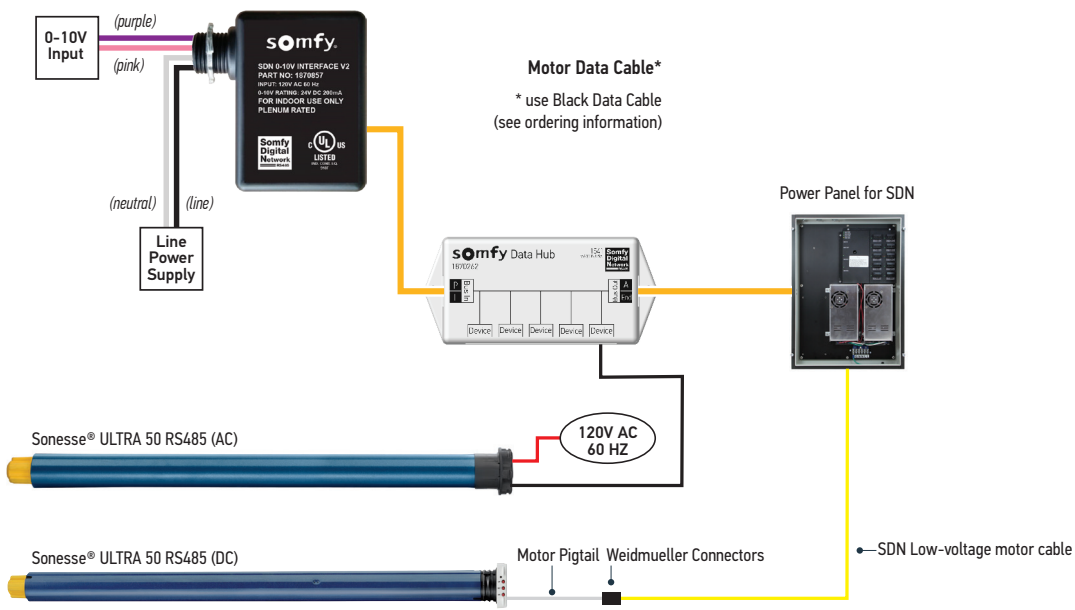
CONNECTION DIAGRAM

The diagram shown below is meant for illustrative purposes to show the connections from product to product. This device could be used in other configurations than shown below. For specification information on individual products, see related product information. Follow all SDN wiring standards for distance limitations.

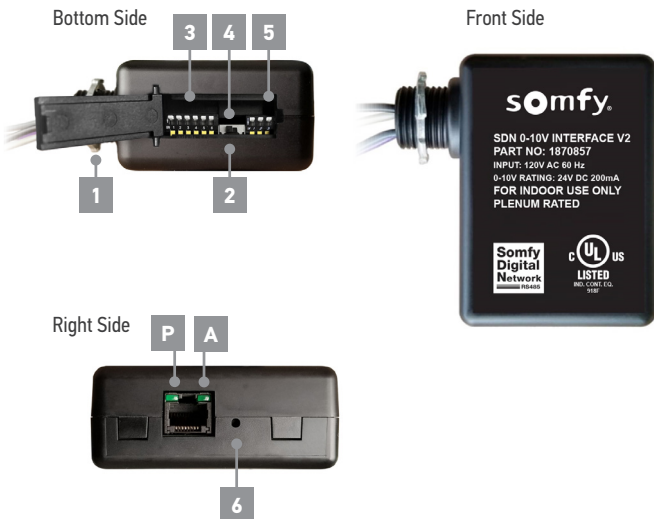
Notes:

For single motor operation, motor data cable connects directly to the SDN Data port.
 This example shows the Data Hub while the Data Hub Mini and Power Panel for SDN are also compatible.

SDN RS485 Tubular motors
(Sonesse® ULTRA 50 RS485 example shown)



CONNECTIONS & INDICATORS



ELEMENT	FUNCTION
1 1/2" NPT Lock Nut	Mounting accessory for the device
2 DIP Switch Bank	Configure operating modes
3 Bank B DIP Switches	Adjust to select specific SDN group address
4 Bus Power Switch	Turn bus power OFF or ON
5 Bank A DIP Switches	Adjust to select a specific control function
6 Pin-Hole Push-Button	(A) sequence/motor testing; (B) animeo discovery (C) software reset

LED Indicators				
LABEL	ELEMENT	COLOR	FUNCTION ON	FUNCTION OFF
P	Main Power	Green	Power	No Power
A	Bus Activity	Green	Data	No Data

MOTOR COMPATIBILITY

Line-voltage (AC):

- Sonesse® ULTRA 50 RS485 (AC)
- Sonesse® 50 RS485
- LT50 RS485 (AC)
- Glydea® ULTRA RS485

Low-voltage (DC):

- Sonesse® ULTRA 50 RS485 (DC)
- Sonesse® 30 RS485 (DC)

MOTOR DATA CABLE INFORMATION

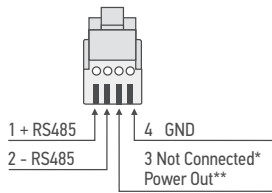
Line-Voltage (AC)

Motor Data Cable

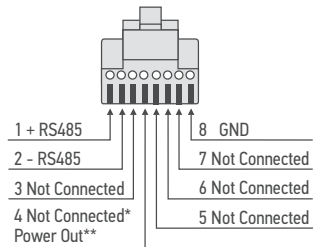
BLACK DATA CABLE (without power out)

4 Cond. 26AWG modular cable with RJ9 on one end and RJ45 other end

RJ9 Connects to Motor

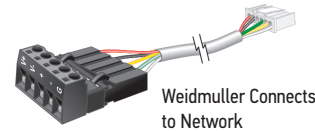


RJ45 Connects to Network

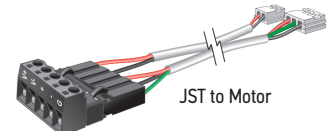


Low-Voltage (DC)

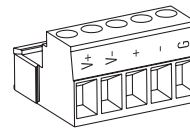
Sonesse® ULTRA 50 RS485 Data and Power Pigtail



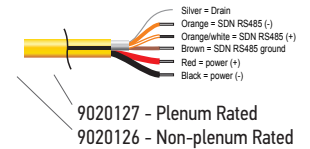
Sonesse® 30 RS485 Data and Power Pigtail



Weidmuller Connector (5 pin)



SDN Low-voltage Motor Power and Data Cable



ORDERING INFORMATION

DESCRIPTION	PART NUMBER
SDN 0-10V Interface V2	1870857
SDN Data Hub	1870262
SDN Mini Data Hub	1870277
Line-voltage RS485 Motor Data Cables	2.5 ft.: 9018541
	8 ft.: 9018542
	12 ft.: 9018543
	24 ft.: 9018544
Low voltage RS485 Motor Accessories	
Power Panel for SDN	1870259
SDN Low-voltage Motor Power and Data Cable	Non Plenum US#: 9020126 CA#: 9020452
	Plenum US#: 9020127 CA#: 9020453
Weidmuller Connector (5 pin)	9020743
Sonesse® 30 DC RS485 Cable Data and Power Pigtail	9020261
Sonesse® ULTRA 50 DC RS485 Cable Data and Power Pigtail	9020004

OFFICE LOCATIONS

New Jersey

121 Herrod Blvd.
Dayton, NJ 08810
P: (800) 22-SOMFY (76639) • F: (609) 395-1776

Florida

1200 SW 35th Ave.
Boynton Beach, FL 33426
P: (800) 22-SOMFY (76639) • F: (561) 995-7502

California

15301 Barranca Pkwy
Irvine, CA 92618
P: (800) 22-SOMFY (76639) • F: (949) 727-3775

Canada

6411 Edwards Blvd
Mississauga, Ontario L5T 2P7
P: 1-800-66-SOMFY • CN: (905) 564-6446
F: (905) 238-1491

For more information visit: www.somfypro.com/products/-/e-cat//1870857