

# SONESSE® ULTRA 30 WIREFREE RTS LI-ION

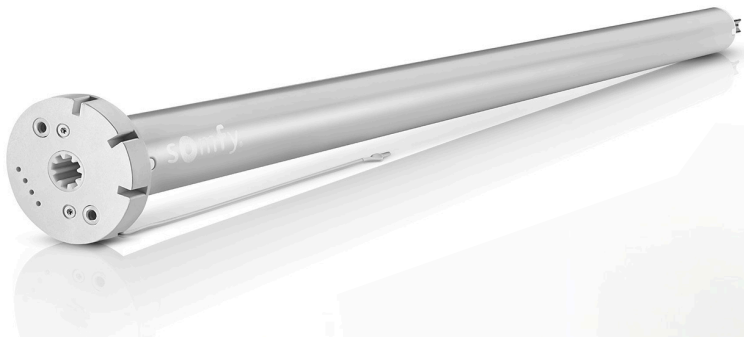
WITH BUILT-IN RECHARGEABLE LITHIUM-ION BATTERY  
FOR INTERIOR WINDOW COVERINGS



## THE ULTIMATE WireFree choice

ultra-quiet ultra-strong ultra-reliable

Increase motorized shading opportunities with Somfy's 2Nm ultra-strong wirefree motor for interior shades: the Sonesse® ULTRA 30 WireFree RTS Li-ion. Its ultra-quiet and ultra-reliable performance also features a built-in lithium-ion battery to eliminate wiring and provide convenience to installers and users.



### Main features & benefits:

- Ultra-quiet operation
- Built-in rechargeable lithium-ion battery
- Improved redesigned motor head
- LED low battery indicator
- Removable charging cable
- Smooth motion with adjustable speed control
- Compatible with the Situo® 5 Variation RTS remote for precise tilt control
- Slow start/stop with adjustable speed control
- Solar charging option
- ESD immunity
- Operates with simple voice commands using Somfy myLink™ and Amazon Alexa or Google Assistant via IFTTT



somfy®

# SONESSE® ULTRA 30 WIREFREE RTS LI-ION

## Sonesse® ULTRA 30 WireFree RTS Li-ion

#1003310



Offers control via Radio Technology Somfy® (RTS)

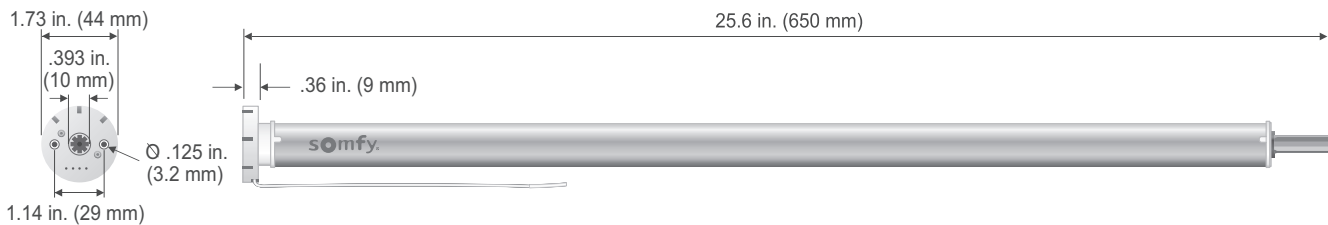
### Applications



### Technical Features

<b>Voltage Supply</b>	12V DC	<b>Temperature Working Range</b>	32°F to 140°F (0°C to 60°C)
<b>Index Protection Rating</b> (interior use only)	IP 20	<b>Insulation Class</b>	Class III
<b>Limit Switch Type</b>	Electronic	<b>Antenna</b>	17.5 cm wire length, must not be cut or lengthened. For greatest RF range, antenna must be outside of the rail, tube or cassette and not come in contact with metal surfaces. For optimal performance, RF antenna wire may need to be repositioned.

### Dimensions



### Specifications

<b>Nominal Torque</b>	2 Nm
<b>Nominal Speed</b>	20 rpm
<b>Adjustable Speed</b>	10-28 by increment of 2 rpm
<b>Sound Level</b>	dBA < 42*
<b>Radio Protocol</b>	RTS
<b>Radio Frequency</b>	433.42 MHz
<b>Battery Type</b>	12V 2600 mAh (built-in Lithium-ion)
<b>Battery Autonomy</b>	Only recharge once per year**
<b>Charging Time</b>	< 4.5 hours
<b>Low Battery Indicator</b>	LED

### Certifications



### Accessories

<b>9025166</b>	Lithium-ion Charger (with 6' cable)
<b>9021016</b>	Extension Charging Cable, 94.5"
<b>9021131</b>	Extension Charging Cable, 8" (For cassette applications)

\* Power Level: - Measurements according to standards ISO 3741 in dB(A) ref 1pW, at nominal torque and nominal speed, between 20°C and 35°C  
- Value: highest typical value between Up direction and Down direction

\*\* Based on one cycle (up and down) per day using average size shade.