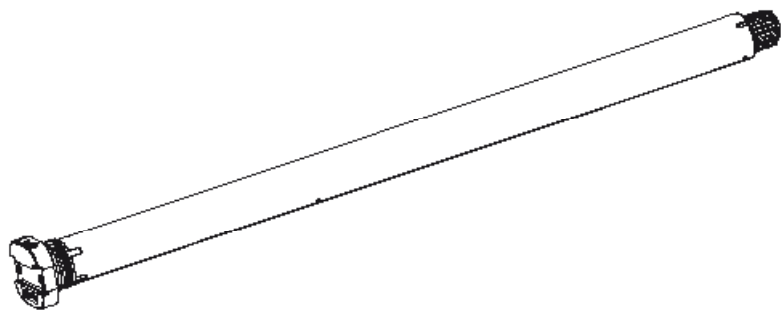


Sonesse Ultra 50 DC RTS

EN INSTRUCTIONS



ORIGINAL GUIDE

These instructions apply to all Sonesse ULTRA 50 DC RTS irrespective of torque and speed variations.

CONTENTS

1. Prerequisite information	3	3. Use and maintenance	9
1.1 Fields of application	3	3.1. Up and Down buttons	9
1.2 liability	4	3.2. STOP function	9
2. Installation	4	3.3. Favourite position (my)	10
2.1. Installation	4	3.4. Additional settings	10
2.2. Wiring	5	3.5. Tips and recommendations for use	10
2.3. Commissioning	6	4. Technical data	11
2.4. Tips and recommendations for installation	7		

The Sonesse ULTRA 50 DC RTS motor has been developed for interior use.

Its ultra quiet operation ensures user comfort and well-being.

For more information, and to optimise the acoustic performance of your interior application, please contact a Somfy adviser.

1. 1. PREREQUISITE INFORMATION

1.1 FIELDS OF APPLICATION

The Sonesse ULTRA 50 DC motor is designed to operate interior Roller blinds applications.

The Sonesse ULTRA 50 DC motor is designed to operate multiple roller blinds simultaneously (multi-banding), where these are interconnected by an intermediate bracket.

The Sonesse ULTRA 50 DC motor is not designed to be used with a compensating spring.

Any use outside the fields of application is prohibited, in particular:

The Sonesse ULTRA 50 DC motor is not designed for outdoor applications (e.g. outdoor vertical blinds, roller shutters, etc.)

1.2 LIABILITY

Before installing and using the motor, please read **operating and installation guide carefully**. In addition to following the instructions given in this guide, the instructions detailed in the attached **Safety instructions** document must also be observed.

The motor must be installed by a motor and home automation professional, according to instructions from Somfy and the regulations applicable in the country in which it is commissioned.

It is prohibited to use the motor outside the fields of application described above. Such use, and any failure to comply with the instructions given in this guide and in the attached **Safety instructions** document, absolves Somfy from any liability and invalidates the warranty.

The installer must inform its customers of the operating and maintenance conditions for the motor and must provide them with the instructions for use and maintenance, and the attached **Safety instructions** document, after installing the motor. Any After-Sales Service operation on the motor must be performed by a motor and home automation professional.

If in doubt when installing the motor, or to obtain additional information, contact a Somfy adviser or go to the website www.somfy.com.

 Safety warning!

 Caution!

 Information

1. 2. INSTALLATION

 Instructions which **must** be followed by the motor and home automation professional installing the motor.

 Never drop, knock, drill or submerge the motor.

 Install a separate control point for each motor.

 To optimize ultra quiet operation, the mechanical plays between motor, accessories, tube and end of tube must be decreased to the maximum.

2.1. INSTALLATION

2.1.1. Preparing the motor

Check that the inner diameter of the tube greater than 47mm.

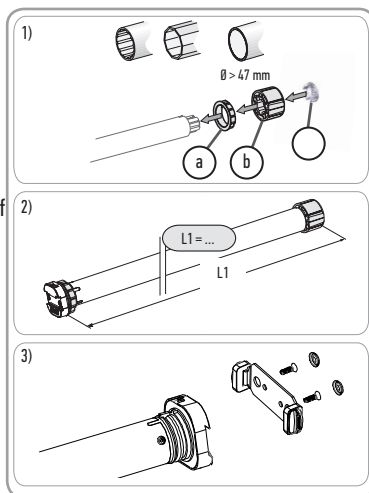
1) Fit the accessories required to integrate the motor in the roller tube:

- Fit the crown a, the motor wheel b and the stop wheel c on the motor.

The stop wheel must be screwed with a torque ranging between 1.5 and 1.8 Nm.

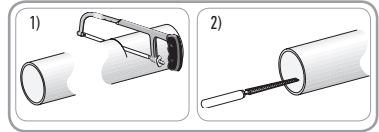
2) Measure the length (L1) between the inner edge of the motor head and the edge of the motor wheel.

3) Screw the bracket interface on the motor head.



2.1.2. Tube preparation

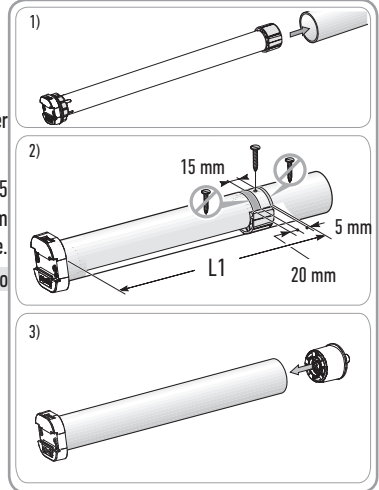
- 1) Cut the roller tube to the required length, depending on the motorised product.
- 2) Deburr the roller tube and remove the swarf.



2.1.3. Motor/tube assembly

- 1) Slide the motor into the roller tube.
- 2) The motor wheel must be locked in place to prevent movement inside the roller tube:
 - This can be done either by fixing the roller tube to the motor wheel using 4 x Ø 5 mm self-tapping screws, or by using 4 x Ø 4.8 mm steel pop rivets placed 5 mm to 15 mm from the outer edge of the motor wheel, regardless of the roller tube.

The screws or pop rivets must only be attached to the motor wheel and not to the motor.
- 3) Slide the end cap into the roller tube and locked it if necessary.



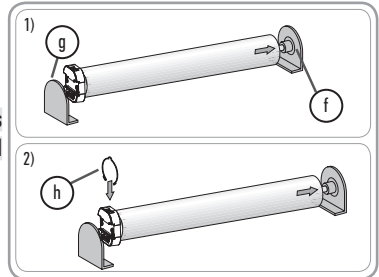
2.1.4. Installing the motor/tube assembly

The motorised product must not be compressed between the brackets

- 1) Install and fix the motor/tube assembly onto the end bracket **f** and onto the motor bracket **g**:

Ensure that the motor/tube assembly is secured onto the end bracket. This operation prevents the motor/tube assembly from coming out of the end bracket mounting when the roller blind reaches the lower end limit position.

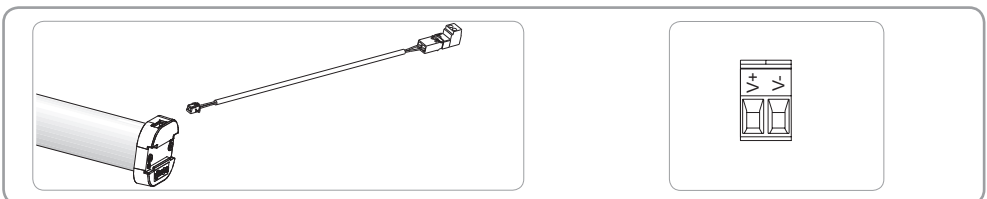
- 2) For star head motors, ensure the stop ring **h** is in place.



2.2. WIRING

- ⚠ Cables which pass through a metal wall must be protected and isolated using a grommet or sleeve.
- ⚠ Attach cables to prevent any contact with moving parts.
- ⚠ The cable on the Sonesse ULTRA 50 can be removed. If it is damaged, replace it with an identical cable.
- 👉 Leave the motor power supply cable accessible: it must be possible to replace it easily.

- Switch off the power supply.
- Connect the cable to the motor head.



2.3. COMMISSIONING

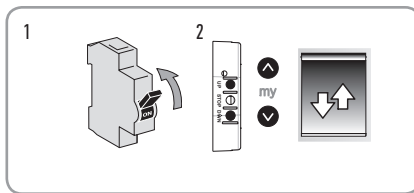
2.3.1. Start the commissioning process

1) Switch on the power supply.

The Led switches ON.

2) Press the **Up** and **Down** buttons on the RTS control point / Motor head at the same time: The motorised product moves up and down (fast raising and lowering), and the commissioning process begins.

The RTS control point is pre-programmed in the motor.



2.3.2. Checking the direction of rotation

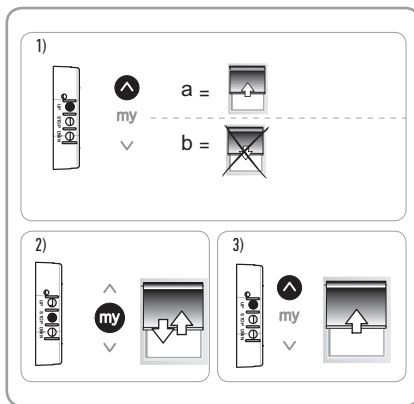
1) Press the **Up** button on the RTS control point / Motor head :

a) If the motorised product rises (a), the direction of rotation is correct. Move onto the section entitled "Setting the end limits".

b) If the motorised product lowers (b), the direction of rotation is incorrect: Move onto the next step.

2) Press the **my / stop** button on the RTS control point / Motor head until the motorised product moves up and down: The direction of rotation has been modified.

3) Press the **Up** button on the RTS control point / Motor head to check the direction of rotation.



2.3.3. Setting the end limits

i The end limits can be set in any order.

1) Raise the motorised product to the desired position by pressing the **Up** button.

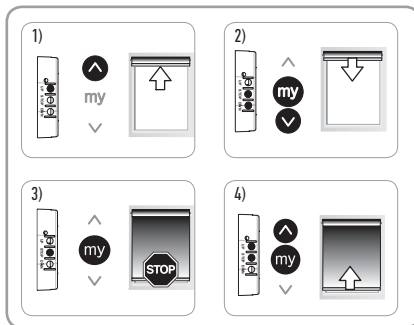
2) Press the **my / stop** and **Down** buttons at the same time until the motorised product moves.

The upper end limit is memorised.

3) Press the **my / stop** button when the motorised product reaches the desired lowered position. If necessary, adjust the position of the motorised product using the **Up** and **Down** buttons.

4) Press the **my / stop** and **Up** buttons at the same time until the motorised product moves.

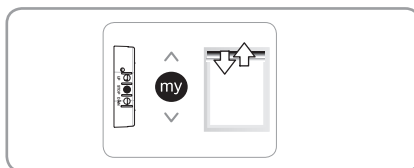
The lower end limit is memorised. The motorised product rises and stops in the raised position.



2.3.4. Validation of the setting

To confirm the end limits, press the **my / stop** button until the motorised product moves up and down.

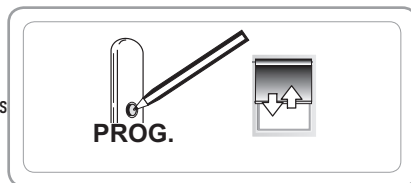
The end limits are programmed and the Led switches OFF.



2.3.5. Recording the RTS control point

The motorisation is in programming mode:

- Quickly press the PROG button on the RTS control point to be programmed:
- The motorised product moves up and down: this RTS control point is programmed in the motorisation.



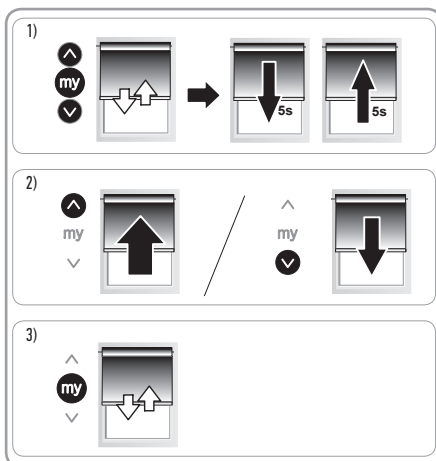
i If the motorisation is no longer in programming mode, repeat Step 2.3.1 then perform Step 2.3.4.

2.3.6. Adjusting the roller speed

1) Press the **Up**, **my** and **Down** buttons simultaneously, until the motorised product moves up and down once. The motorised product moves up and down automatically, in 5 second cycles.

2) While the motorised product is moving, briefly press the **Up** button, to increase the speed, or **Down** button, to decrease the speed.

3) To confirm the new speed, press and hold the **my** button until the motorised product moves up and down.



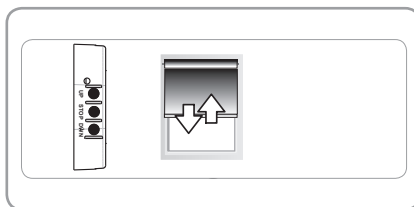
2.3.7. Adding/Deleting Somfy control points and sensors

With local control point:

Refer to the corresponding guide

With the Motor head buttons

Press and hold all the three buttons on the motor head until the motorised product moves up and down. Then press on the prog button of the control points or sensor to add or delete.



2.3.8. Sonesse ULTRA 50 DC RTS «sleeping» mode

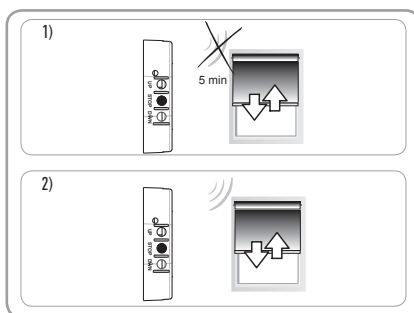
i This function allows to lock any transmitters orders during 5mn. Motor won't react to any transmitters commands. The «sleeping» mode is **only** possible if the motor is already set.

1) To put the motor into the «sleeping» mode, briefly press 2 times the Stop button of the motor head.

The motorised product moves up and down and the motor head LED blink 2 times during 5 min.

2) To put the motor out of the «sleeping» mode, briefly press 2 times the Stop button of the motor head.

The motorised product moves up and down and the motor head LED turns off. The transmitters orders wil be executed.



2.3.9. Sun function

For this function, you need a Telis Soliris transmitter.

By default, the Sun function is not active.

1) To activate the Sun function, press the SELECT button on the Telis Soliris transmitter, until the shade makes an Up and Down movement.

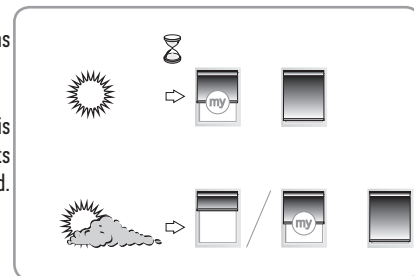
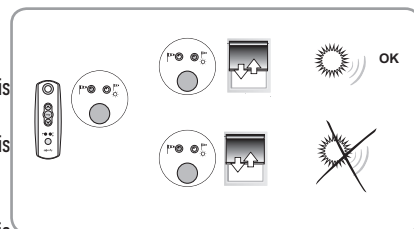
2) To deactivate the Sun function, press the SELECT button on the Telis Soliris transmitter, until the shade an Up and Down movement.

When the intensity of the daylight exceeds the threshold set by the Soliris sensor RTS, a CLOSURE order is sent to the shade after 2 min.

The shade goes to the My position or to its down limit, if no My position has been memorized.

When the intensity of the daylight falls below the threshold set by the Soliris sensor RTS, the shade goes to the Sun disappearing position or stays at its position (My or down limit), if no Sun disappearing position has been memorized.

The Wind function is not compatible with this motor.

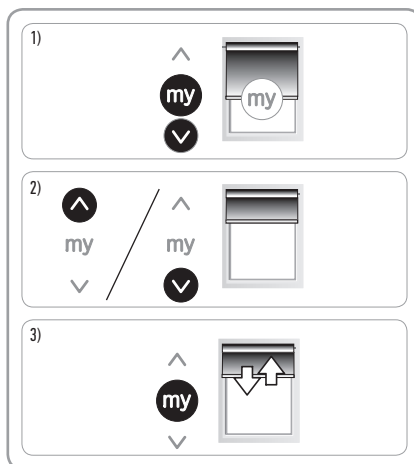


Sun disappearing position

 A favourite position (**my**) must be already recorded before recording the Sun disappearing position (see 3.3)

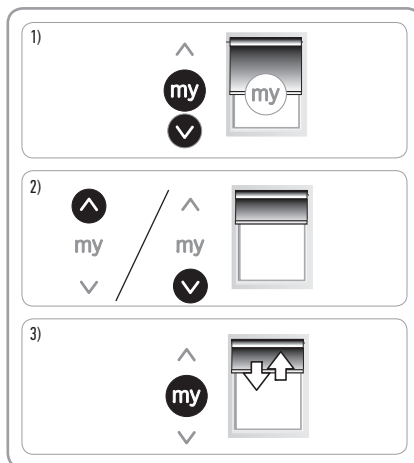
2.3.10. Recording Sun disappearing position

- 1) Press the **my** and **Down** buttons, until the motorised product moves.
- 2) Move the motorised product to the desired position with the **Up** and **Down** buttons.
- 3) Press the **my** button, until the motorised product moves.
The Sun disappearing position is recorded.



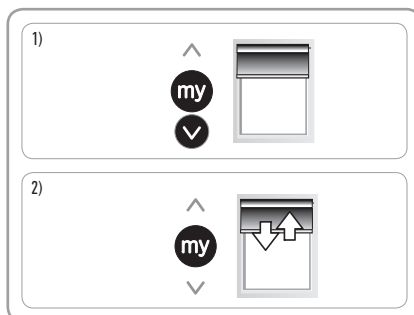
2.3.11. Changing the Sun disappearing position

- 1) Press the **my** and **Down** buttons, until the motorised product moves.
- 2) Move the motorised product to the new desired position with the **Up** and **Down** buttons.
- 3) Press the **my** button, until the motorised product moves.
The Sun disappearing position is changed.



2.3.12. Delete the Sun disappearing position

- 1) Press the **my** and **Down** buttons, until the motorised product moves.
- 2) Press the **my** button, until the motorised product moves.
The Sun disappearing position is deleted.



2.4. TIPS AND RECOMMENDATIONS FOR INSTALLATION

2.4.1. Questions about the Sonesse ULTRA 50 DC RTS?

Observations	Possible causes	Solutions
The motorised product does not operate.	The wiring is incorrect.	Check the wiring and modify it if necessary.
	The Motor is in thermal protection.	Wait until the motor cools down.
	The control point battery is weak.	Check whether the battery is weak and replace it if necessary.
	The control point is not compatible.	Check for compatibility and replace the control point if necessary.
	The control point used has not been programmed into the motor.	Use a programmed control point or program this control point.
The motorised product is noisy:	The motor wheel and the crown are not suitable for the tube.	Replace the motor wheel and the crown
	The motorised product is compressed between the brackets	Increase the play between the brackets
	The tube contains swarf and screws.	Clean the roller tube.
The motorised product stop to soon or to late.	The end-limits of the motorised product drift.	Readjust the end-limits

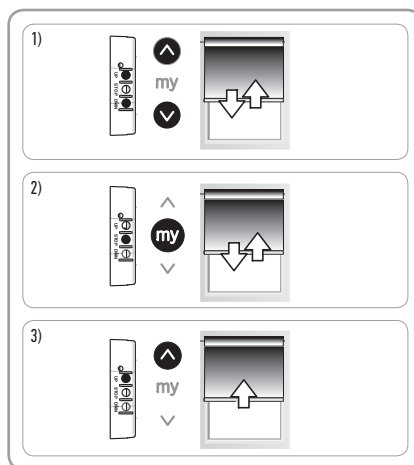
2.4.2. Readjusting the direction of rotation

Move the motorised product away from the end limits.

1) Press the **Up** and **Down** buttons simultaneously, until the motorised product moves up and down.

2) Press the **my** button, until the motorised product moves up and down, to reverse the rotation direction.

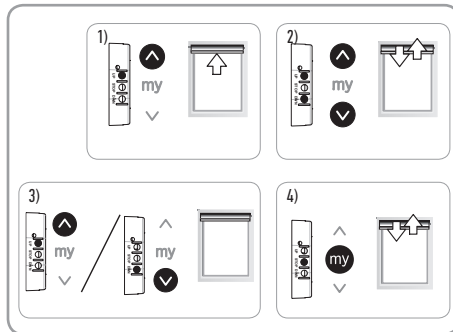
3) Press the **Up** button to check the new direction of rotation.



2.4.3. Readjusting the end limits

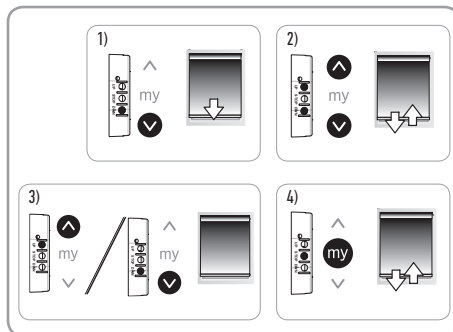
Readjusting the upper end limit

- 1) Press the **Up** button to bring the motorised product to the end limit to be readjusted.
- 2) Press the **Up** and **Down** buttons at the same time until the motorised product moves up and down.
- 3) Press the **Up** or **Down** button to move the motorised product to the new desired position.
- 4) To confirm the new end limit, press the **my / stop** button until the motorised product moves up and down.



Readjusting the lower end limit

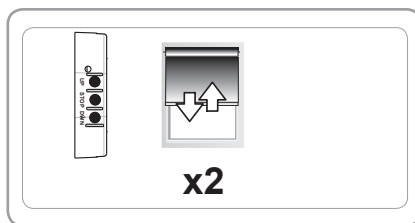
- 1) Press the **Down** button to bring the motorised product to the end limit to be readjusted.
- 2) Press the **Up** and **Down** buttons at the same time until the motorised product moves up and down.
- 3) Press the **Up** or **Down** button to move the motorised product to the new desired position.
- 4) To confirm the new end limit, press the **my / stop** button until the motorised product moves up and down.



2.4.4. Erasing all transmitters of the motor

To delete all the control points programmed, press and hold all the three buttons on the motor head until the motorised product moves up and down twice.

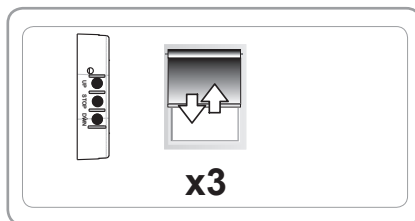
All the control points are deleted.




2.4.5. Restoring the original configuration

To return the motor in the original configuration, press and hold all the three buttons on the motor head until the motorised product moves up and down three times.

All the settings are erased and the Led switches ON.



1. 3. USE AND MAINTENANCE

 This motor is maintenance-free



For the safety of goods and people, Somfy motors are equipped with thermal protection that will trigger the motor stops in the event of overheating.

Repeated activation of this protection can degrade motor performance.

If the motor goes to thermal protection, please check your installation and check that the motor is rated for the intended use.

A normal installation is not expected to trigger this protection.

To avoid the drift of the end limits, do not cut the power supply more than 1 week.

3.1. UP AND DOWN BUTTONS

Pressing the **Up** or **Down** button fully raises or lowers the motorised product.

3.2. STOP FUNCTION

The motorised product is moving.

- Briefly press the **my** button: the motorised product stops automatically.

3.3. FAVOURITE POSITION (my)

Besides the upper and lower positions, an intermediate position known as the "favourite position (my)" can be programmed in the Sonesse ULTRA 50 DC RTS.

3.3.1. Record or Modify the favourite position (my)

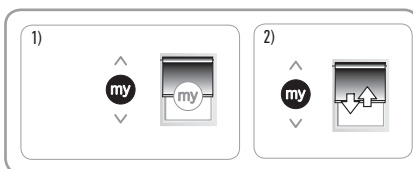
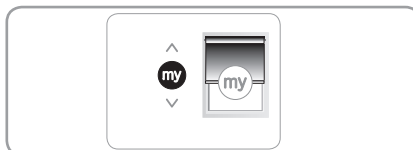
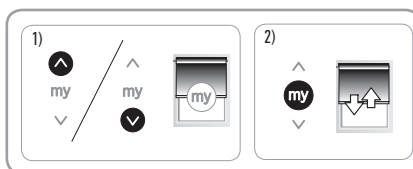
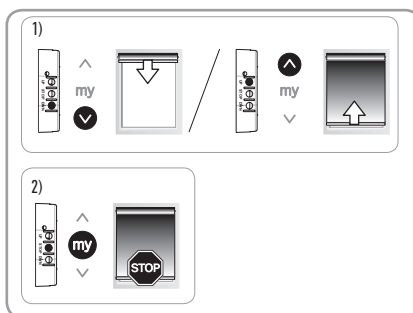
- 1) Place the motorised product in the desired favourite position (my).
- 2) Press the **my** button for ≈ 5 seconds until the motorised product moves up and down: the desired favourite position (my) has been programmed.

3.3.2. Use the favourite position (my):

Briefly press the **my** button: the motorised product starts to move, and stops in the favourite position (my).

3.3.3. Deleting the favourite position (my)

- 1) Press **my**: the motorised product starts to move, and stops in the favourite position (my).
- 2) Press **my** again until the motorised product moves: the favourite position (my) is deleted.



3.4. TIPS AND RECOMMENDATIONS FOR USE

3.4.1. Questions about the Sonesse ULTRA 50 DC RTS?

Observations	Possible causes	Solutions
The motorised product does not operate.	The control point battery is weak.	Check whether the battery is weak and replace it if necessary.
	The motor is in thermal protection mode.	Wait for the motor to cool down.

If the motorised product still does not work, contact a motorisation and home automation professional.

3.4.2. Replacing a lost or broken Somfy control point

To replace a lost or broken control point, contact a motorisation and home automation professional.

1. 4. TECHNICAL DATA

Power supply	24V dc
Radio frequency	433.42 MHz
Operating temperature	0°C to + 60°C
Index protection rating	IP 31
Safety level	Class III
Maximum number of control points	12
Maximum number of sensors	3

1. 5. POWER SUPPLY

The Sonesse ULTRA 50 DC RTS is only compatible with the following power supplies:

Manufacturer	Model	Ratings
CUI INC (E210311)	EMSA240125	Input: 100 - 240 Vac, 50-60 Hz, 1.0 A Output: 24 VDC, 1.25 A, LPS (#)
CUI INC (E210311)	EMSA240167	Input: 100 - 240 Vac, 50-60 Hz, 1.0 A Output: 24 VDC, 1.67 A, LPS (#)

Somfy SAS

50 avenue du Nouveau Monde
BP 152 - 74307 Cluses Cedex
France

www.somfy.com

somfy®