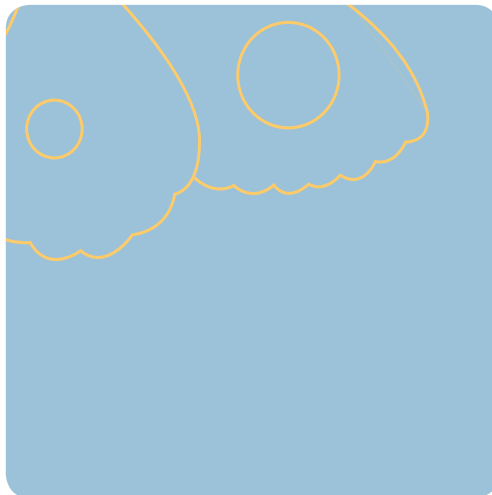


**WireFree™**

**100% wireless**  
motors for interior window coverings.



Get your creations moving...

*...it will change everything!*

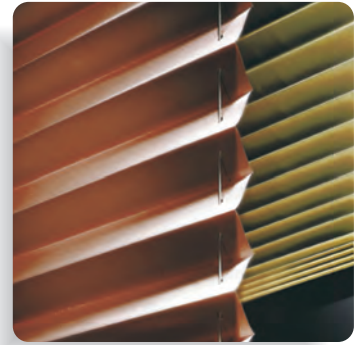


# With Somfy, take control of your interior window coverings...

Somfy offers an innovative and simple line of completely battery-powered WireFree™ motors. These motors install in minutes and provide a perfect solution for areas where access to traditional power outlets or wiring may be a challenge, such as skylights and doors. This allows the ability to create the best living environment with optimal natural light levels at the press of a button.



Roller/Solar Shades



Cellular/Pleated Shades

## WireFree™ Range

### Roll Up WireFree™

### Cord Lift WireFree™

### Tilt WireFree™

## Applications

	Maximum Shade Size*
Roller/Solar Shade	10%: 72" x 104" 5%: 72" x 96" 3%: 72" x 72"
Sheer Horizontal with Tilt control	Light Filtering, 112" x 128" Room Darkening, 112" x 120" 2" & 3" vanes
Roman/Woven Shade	11lbs

\* Based on a Rollease 1.5" tube

	Maximum Shade Size*
Cellular/Pleated Shade	120" x 120"

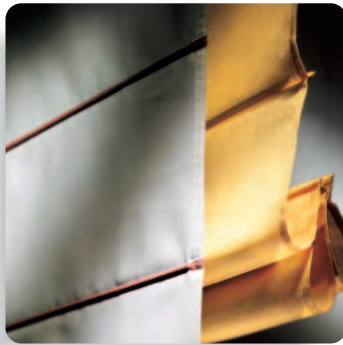
\*Based on 1/2 single cell light filtering utilizing RollEase spears/traversing shaft cord lift systems

	Maximum Blind Size
2" Horizontal Blind	≤ 96 sq. ft. Basswood

Somfy's 100% wireless WireFree™ motor range enhances your creations without changing the design or making them more complicated to install. Motor options are available for virtually all window covering types including:



Horizontal Blinds



Roman/Woven Shades



Sheer Horizontal Shades

## Technologies



Radio Technology Somfy®



## Motor Characteristics



12V DC motor Radio Technology Somfy® (RTS) version or integrated IR with sensor accessory



Radio Technology Somfy®



12V DC motor Radio Technology Somfy® (RTS) version



Radio Technology Somfy®



12V DC motor Radio Technology Somfy® (RTS) version or IR with sensor accessory

# WireFree™ Motor Specifications



- Voltage
- Current
- Power
- Limit Setting
- Radio Frequency (built-in)
- Motor Dimensions
- Speed
- Torque
- Motor & Accessories

## Roll Up WireFree™

12V DC
1 A
8 AA Lithium Batteries or 12V DC Plug-in Transformer
Electronic encoder based via transmitter
433 MHz (applies to RTS motor #1001683)
Length: 10.4in. (264mm); Minimum Tube ID 1.25in. (30mm)
27 rpm
1 Nm (8.8 in. lb.)

Catalog No.	Description
1001683	Roll Up WireFree™ Motor, Radio Technology Somfy® (RTS)
1000679	Roll Up WireFree™ Motor, Infrared
9013487	Crown and Drive Pack, RollEase® 1.25in. Tube
9013488	Crown and Drive Pack, RollEase® 1.5in. Tube
9013489	Crown and Drive Pack, Silhouette™ (post March 04')
9013486	Crown and Drive Pack, Shangri-La™/Vienna Tube
9014046	Crown and Drive Pack, Louvolite 1 5/8in. Tube
9015288	Crown and Drive Pack, Acmeda 44 Tube
9014406	IR Receiver Eye, White, 10in.
9014539	IR Receiver Eye, Black, 10in.

## Cord Lift WireFree™

12V DC
1.2 A
8AA Lithium Batteries or 12V DC Plug-in Transformer
Electronic encoder based via transmitter
433 MHz
Length: 4.19in. (113.95mm); Height: 1.23in. (31.24mm)
72 rpm
.34 Nm (3in. lb.)

Catalog No.	Description
1001684	Cord Lift WireFree™ Motor Radio Technology Somfy® (RTS)
9013291	Cord Lift WireFree™ RTS Programming Reset Tool
<b>SHAFT ADAPTERS (REQUIRED)</b>	
9013269	<b>4mm Square Shaft Adapter Fits:</b> New Graber Easy Up®
9013283	<b>Spears Shaft Adapter Fits:</b> Comfortex/Kensington Omni-Rise, Kirsch/Levolor Accordia, RollEase® 1.5in. VersaRail & Graber old style Easy Up® systems.
9013284	<b>Tape Reel Shaft Adapter Fits:</b> Hunter Douglas EasyRise™ *, Kensington Deluxe Cord Loop® System
9013285	<b>5mm Hex Shaft Adapter for Somfy CTS Fits:</b> RollEase® 1.5in. VersaRail, Comfort/Kensington Omni-Rise, Graber old style Easy Up®, Hunter Douglas EasyRise™, Kensington Deluxe Cord Loop systems
9013268	<b>5mm Square Shaft Adapter Fits:</b> Hunter Douglas, Easy Glide® 3/8in. Duette
9015899	<b>"V" Notch Shaft Adapter Fits:</b> Comfortex, Turnils, Flexo (Global Rail)
<b>HEADRAIL ADAPTERS-OPTIONAL</b>	
9013287	<b>Fits:</b> Hunter Douglas EasyRise™*
9013288	<b>Fits:</b> New Graber Easy Up® Cord Loop
9013443	<b>Fits:</b> Kensington Deluxe Cord Loop
9013444	<b>Fits:</b> Hunter Douglas 3/8in. Easy Glide Duette*
9015900	<b>Fits:</b> Comfortex Global Rail

\*Note: Currently not adaptable to New EasyRise™ systems

## Tilt WireFree™

12V DC
.4 A
8AA Lithium Batteries or 12V DC Plug-in Transformer
Electronic encoder based via transmitter
433MHz2 (applies to RTS motor #1000678)
Length: 3.6in. (91.4mm) x 2in. (50.8mm); Height: x 1.2in. (31.5mm)
12rpm
1.1 Nm (9.6 in. lb.)

Catalog No.	Description
1000678	Tilt WireFree™ Motor, Radio Technology Somfy® (RTS)
1000677	Tilt WireFree™ Motor, Infrared (IR)
9014528	Low Profile Headrail Adapter (required for 1 1/2in. X 2 1/4in. headrail)
9014529	Headrail Adapter (required for 2in. X 2 1/4in. headrail)
9014535	Shaft Adapter - 5.6mm hexagonal
9014536	Shaft Adapter - D Rod
9014540	Shaft Adapter - 4mm Square
9014406	IR Receiver Eye, White, 10in.
9014539	IR Receiver Eye, Black, 10in.

## ● Power Section



9014020  
12V DC Reloadable Battery Tube  
(batteries not included)



9015580  
Dual Reloadable Battery Tube (harness only)  
to connect 2 reloadable battery tubes



9014834  
8 AA Lithium Battery Package



1822192  
12V DC Plug-In Transformer  
with 25ft. cable (white)

NOTE: Items in the power section are compatible with all WireFree™ motors.

WIREFREE™ MOTORS ARE AVAILABLE WITH FLEXIBLE CONTROL OPTIONS TO CREATE THE IDEAL AMBIANCE WITH THE PRESS OF A BUTTON.

## Radio Technology Somfy® (RTS)



Radio Technology Somfy®

- Built-in Radio Technology Somfy® (RTS) control
- Compatible with the full range of Somfy RTS controls
- Programmable limit (stop) settings via a hand-held transmitter or wall switch
- Multi-channel radio capability with individual and/or group control



More than 10 million installations throughout the world

A patented radio control platform which enables users to adjust window coverings from a distance of 65 ft. without the need to point the transmitter

## Infrared (IR)



- Infrared control via external receiver eye
- Multi-channel infrared capability with group control
- Programmable limit (stop) settings via transmitter
- Compatible with 3rd party programmable infrared remotes

### Infrared (IR) Controls

Improved ergonomic design  
(Roll Up WireFree™ IR sensor required)  
(Tilt WireFree™ IR sensor required)



\*Infrared Control is not available with the Cord Lift WireFree™ motor.

# CONTROL OPTIONS INCLUDE RADIO TECHNOLOGY SOMFY® (RTS) OR INFRARED SYSTEMS.

## Telis Hand-Held Remotes RTS

Single Channel and Five Channel Hand-Held Transmitters



Pure Finish  
1810632 1810633



Silver Finish  
1810639 1810641



Lounge Finish  
1810650 1810652



Patio Finish  
1810643 1810645

## Telis 16 RTS

16 Channel Hand-Held Transmitter with On-screen Display



Pure Finish 1811081  
Silver 1811082

## Telis Modulis RTS Hand-Held Remotes

Single Channel and Five Channel Hand-Held Transmitters with scroll wheel for precision tilting of horizontal blind slats



Pure Finish  
1810974 1810765



Silver Finish  
1810975 1810663



Lounge Finish  
1810976 1810664

## Telis 6 Chronis RTS

Programmable Timer with on-screen display



Pure Finish 1805217  
Silver Finish 1805218

## DecoFlex WireFree™ RTS

Single to Five Channel Wireless Wall Switches



1810897 1811072 1810830

## DecoFlex Table Top Accessory

### WireFree™ RTS

Single to Five Channel Table Top Accessory Switch must be ordered separately



1810972 1811051



Sunis Indoor WireFree™ RTS Sun Sensor  
9013707



Thermo Sunis Indoor WireFree™ RTS Sun & Temperature Sensor  
9013708

For additional information regarding Somfy's WireFree™ motor range, please call 1-877-43-SOMFY or visit us at [www.somfysystems.com/wirefree](http://www.somfysystems.com/wirefree)

**Somfy Systems, Inc.  
North America Headquarters**

121 Herrod Blvd  
Dayton, NJ 08810  
(P) 800 22 SOMFY  
(P) 609 395 1300  
(F) 609 395 1776

**Florida**

6100 Broken Sound Pkwy N.W.  
Suite 14  
Boca Raton, FL 33487  
(P) 877 227 6639  
(P) 561 995 8376  
(F) 561 995 7502

**California**

15291 Barranca Pkwy  
Irvine, CA 92618  
(P) 877 727 6639  
(F) 949 727 3775

**Somfy ULC**

**Somfy Canada**

6315 Shawson Drive Unit 1  
Mississauga, Ontario L5T1J2  
(P) 800 667 6639  
(P) 905 564 6446  
(F) 905 564 2679

