

# Control4 to Digital Motor Interface (DMI)

Item #: 1870533

## OVERVIEW:

The **Control4 to Digital Motor Interface (DMI)** is a wireless end node within a Control4 system. It receives Control4 Zigbee transmissions and converts them to motor control commands (via Control4 Integration systems) for Somfy's line of Sonesse 50 RS485 (AC/DC), Sonesse 30 RS485 (DC), and Glydea ULTRA RS485 motors. The interface also receives feedback information from these motors and distributes it to the Zigbee network.



## TECHNICAL SPECIFICATIONS:

- JST Input/Output: 24V DC
- Power Consumption: 50 mA @ 24V DC
- Material: ABS
- Dimensions: 3.94" L x 1.98" W x .95" H
- Operating Temperature Range: Ambient Temperature
- Frequency: 2.4 GHz
- Shipping Weight: 1 lb.
- Control4 Certified Driver

## REQUIRED ACCESSORIES:

- Power & Data Adaptor Cable 9027112 (sold separately)

## WHAT'S IN THE BOX:

- Control4 to Digital Motor Interface
- Product Instructions

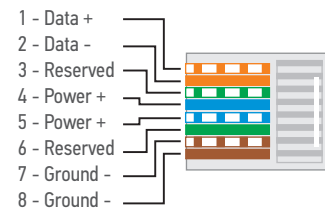
## FEATURES SUMMARY:

- Easily integrates with Control4 systems
- Connects directly to the motor for power
- Identifies and connects to the motor automatically
- Provides feedback to the Control4 system with a 500ms real time response

## CABLE PINOUTS:

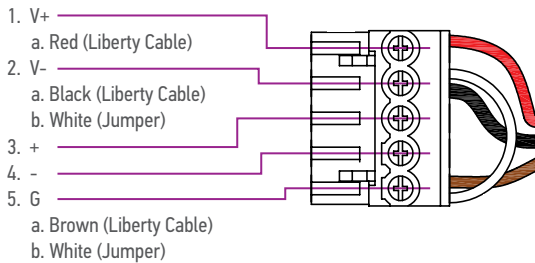
### SDN Pinout

ANSI/TIA/EIA 568-B Standard

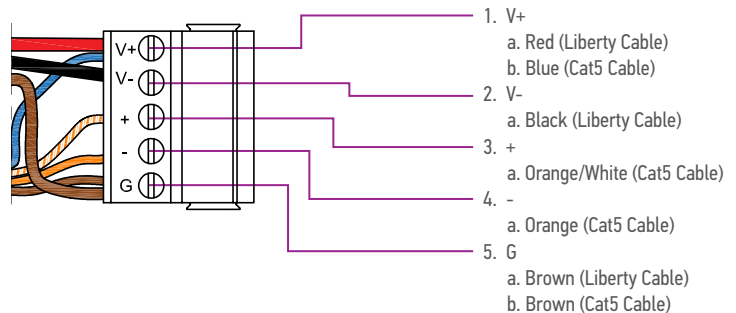


## CABLE PINOUTS (for 9027112 Power and Data Adaptor Cable)

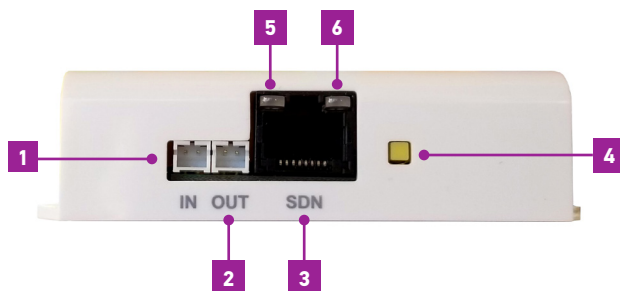
### Weidmüller Female



### Weidmüller Male

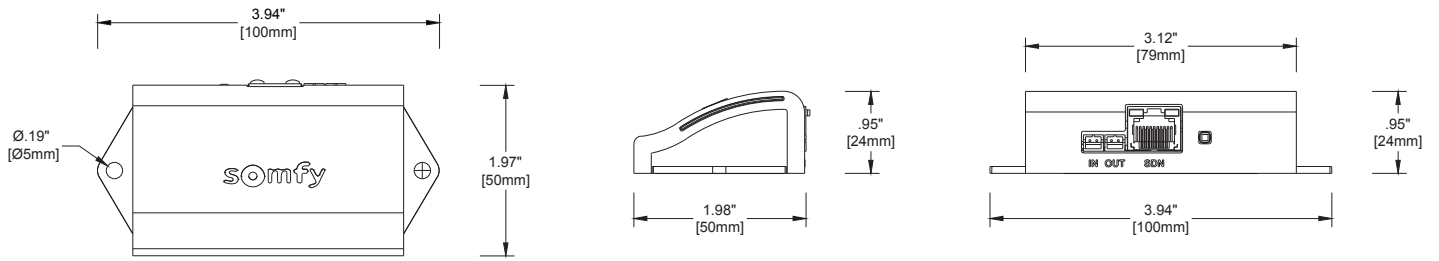


## CONNECTIONS AND INDICATORS:



ELEMENT	FUNCTION
1 <b>Power Input</b>	24V DC power
2 <b>Power Output</b>	24V DC output to motor
3 <b>SDN</b>	RJ45 input for RS485 AC motor
4 <b>Setup</b>	Identification into a Zigbee network
5 <b>Left LED</b>	GREEN - power to device OFF - no power to device
6 <b>Right LED</b>	RED - Zigbee status ORANGE > GREEN (Flashing) - communication to motor ORANGE (Flashing) - inclusion mode ORANGE (Solid) - connected to Zigbee network OFF - not joined to network

## DIMENSIONS:



## BEST WIRING PRACTICES

The diagram shown below is meant for illustrative purposes to show the connections from product to product. This device could be used in other configurations than shown below. Somfy does not recommend making custom cable with this device. Please ensure that the limits on the motor have been set and tested.

