



The **Somfy TaHoma® switch** Checklist



TaHoma® switch
1871037

TaHoma® switch
(with ethernet adaptor)
1871038

Bring connectivity and advanced control to Somfy-powered shades thanks to TaHoma switch. The TaHoma pro app allows you to easily configure window coverings and set up the network using your smartphone or tablet.



Use this checklist (system requirements) to ensure TaHoma® switch will perform as designed

Prerequisites:

Place TaHoma switch at least 5 feet from any Wi-Fi routers or access points

A wireless router running a 2.4 GHz network with open and mixed mode encryption

- Supported security: WEP/WPA/WPA2-personal

Dedicated 110V outlet

Note: Do not plug USB directly into a compatible device, must be directly connected to AC via provided power supply.

Wi-Fi Network Name (SSID) and Password

Note: Internet is needed for setup and usage.

Environmental considerations for optimal performance

Prerequisites:

Hub must be placed in central location to ensure signal strength in a home

The motor antenna must be accessible

Add Zigbee repeating devices to strengthen the mesh network

Do **not** place the hub near a metallic surface and/or inside a duct containing electric cables

Do **not** use hub in areas where devices using radio frequency transmission are prohibited

Do not place the TaHoma switch near devices which could be affected by radio waves:

- Fish Tanks (Aquariums)
- Cordless Phones
- Microwaves
- Baby Monitors
- Refrigerators

TaHoma pro

TaHoma pro



TaHoma pro

- iOS Version 15.0 or later
- Android Version 8.0 and up
- Download the TaHoma pro app from:
 - [App Store \(iOS\)](#)
 - [Google Play \(Android\)](#)
- Create your TaHoma pro account:
 - a. Click on <Create an account> on the app screen
 - b. Add user email for account creation
 - c. Refer to the [TaHoma pro Account Setup](#) for additional information.

Frequently asked questions

What Zigbee devices are compatible with TaHoma?

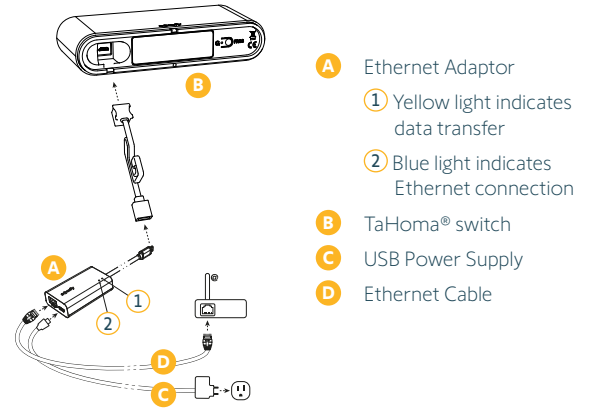
Any Zigbee 3.0 product or window covering can be controlled via the TaHoma by Somfy app for end users..

Can I use TaHoma switch if I don't have a wireless network connection?

Yes. With TaHoma switch, you can connect to the internet with a hardwired connection using the TaHoma Ethernet Adaptor (ref # 9028054, may be sold separately).

What Services are compatible with TaHoma switch?

- Alarm.com
- Amazon Alexa
- Apple Home
- Brilliant
- Control 4
- Crestron
- Crestron Home
- Elan
- Google Assistant
- IFTTT
- Phillips Hue
- RTI
- Samsung SmartThings
- Savant
- URC



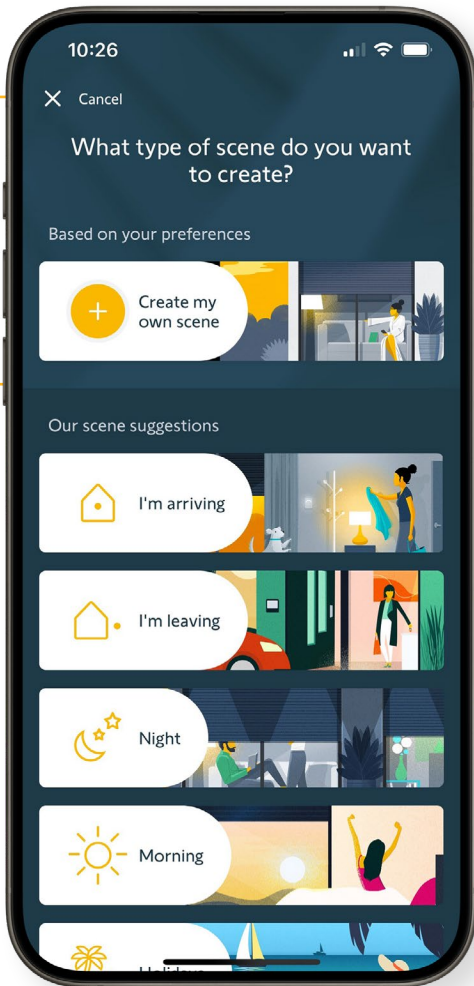
For Zigbee installation

How many TaHoma interfaces will I need?

- One TaHoma switch can control the entire home.
- Each TaHoma switch can control up to 60 Somfy Zigbee products, and 40 channels of RTS.

*Each channel can operate an individual shade or group of shades.





TaHoma by Somfy App



TaHoma by Somfy

- iOS Version 15.0 or later
- Android Version 8.0 and up

Easy to use

- Download the free TaHoma by Somfy app
- Simple & intuitive on-screen instructions for users to follow
- Create scenes by grouping multiple channels together
- Create schedules by setting one or more scenes on a timer
- Add Amazon Alexa, Apple Home, or Google Home for seamless voice control
- Integration-ready for third-party control systems



Click the links below to learn more

[Discover TaHoma switch](#)

[FAQs](#)

[Video Tutorials](#) (coming soon)

[Spec Sheet](#)

[Integration Guides](#)

[Programming Guide - TaHoma pro Dealer Version](#)



© Somfy Systems, Inc. Photos : © Somfy/SAS MARCH 2024
Android is a trademark of Google LLC Apple and Apple logos are trademarks of Apple, Inc., registered in the U.S. and other countries.
Amazon, Alexa, and all related logos are trademarks of Amazon.com, Inc. or its affiliates.
Zigbee® is a registered trademark of Connectivity Standards Alliance.
All brands, products and trademarks are the property of their respective owners.

About Somfy®

For over 50 years, Somfy has been pioneering innovative motorization and automated solutions for window coverings and exterior shading products. With comfort, ease of use, security, and sustainability in mind, our seamless and connected solutions are designed to help people make the move to living spaces impactful for humans and with a reduced impact on nature.

A BRAND OF **SOMFY** GROUP

New Jersey
121 Herrod Blvd.
Dayton, NJ 08810
T: (609) 395-1300
F: (609) 395-1776

Somfy Systems, Inc.
T: **(800) 22-SOMFY**
www.somfypro.com

Florida
1200 SW 35th Ave.
Boynton Beach, FL 33426
T: (561) 995-0335
F: (561) 995-7502

California
15301 Barranca Pkwy.
Irvine, CA 92618-2201
T: (949) 727-3510
F: (949) 727-3775

Somfy ULC
T: **(800) 66-SOMFY**
www.somfypro.ca

Canada
6411 Edwards Blvd.
Mississauga, ON L5T 2P7
T: (905) 564-6446
F: (905) 238-1491